

TACAN TIK

Chan 105

APCH CRS

176°

Rwy Idg 11,100

THRE 1260

Arpt Elev 1291

JAL-299 [USAF]

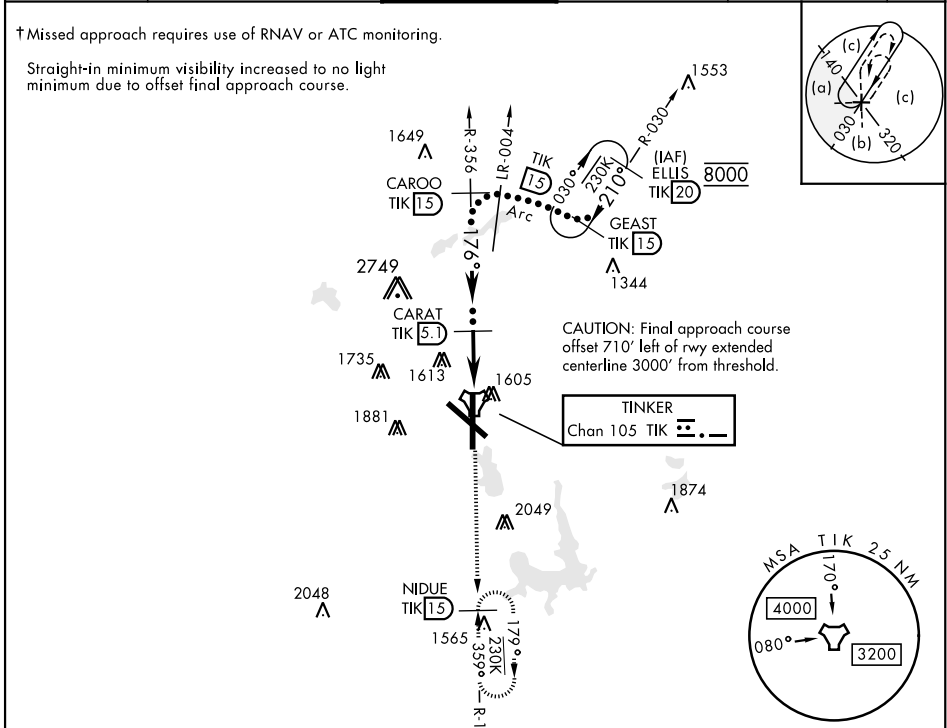
TINKER AFB (KTIK)

▼ *CAT E circling not authorized in sector S of Rwy 13-31. Circling not authorized to Rwy 18.

SALS

† MISSED APPROACH: Climb to 4000 on TIK TACAN R-179 to NIDUE and hold.

ATIS ★ 270.1	OKE CITY APP CON 124.2 336.4	TINKER TOWER 124.45 251.05	GND CON 121.8 275.8	CLNC DEL 119.7 335.8	ASR
-----------------	---------------------------------	-------------------------------	------------------------	-------------------------	-----



EMERG SAFE ALT 100 NM 4700

ELEV 1291

THRE 1260

ELLIS R-030

GEAST R-030

CAROO R-356

CARAT TIK 5.1

TACAN

ZOLIB 0.3

4000

TIK R-179

NIDUE TIK 15

CATEGORY	C	D	E
S-18	1720/55	460	(500-1)
CIRCLING *	1960-1¾ 669 (700-1¾)	1960-2 669 (700-2)	1960-2¼ 669 (700-2¼)

HIRL Rwy 18-36, 13-31

176° 5.5 NM from FAF