

OKLAHOMA CITY, OKLAHOMA

RNAV (GPS) RWY 18

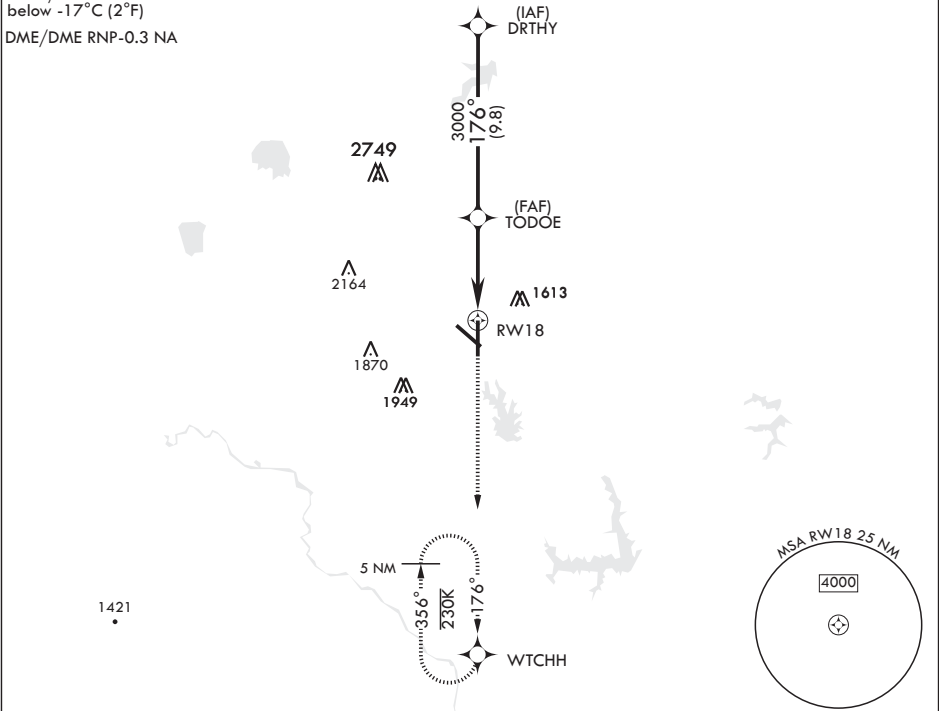
APCH CRS	Rwy Idg	11,100
176°	THRE	1260
	Arpt Elev	1291

AL-299 (USAF)

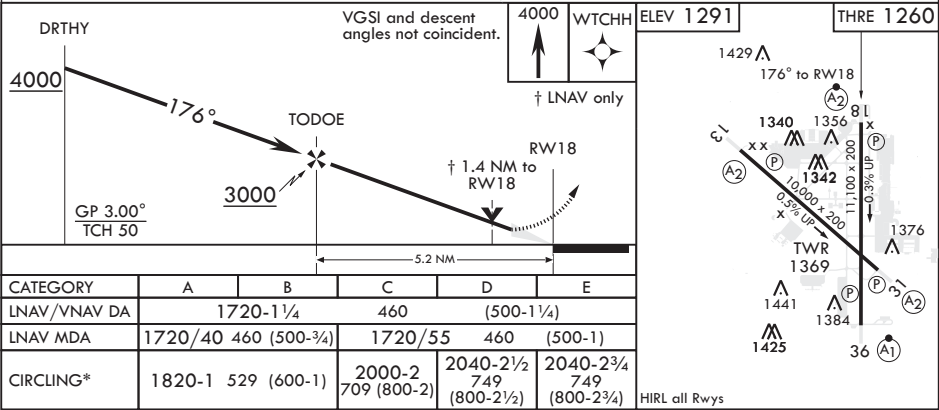
TINKER AFB (KTIK)

* Cat E Circling not authorized in sector S of Rwy 13-31 and W of Rwy 18-36.		SALS A2	MISSED APPROACH: Climb to 4000 direct WTCHH waypoint and hold.		
ATIS★ 270.1	OKE CITY APP CON 124.2 336.4	TOWER 124.45 251.05	GND CON 121.8 275.8	CLNC DEL 119.7 335.8	ASR

For uncompensated Baro-VNAV systems, LNAV/VNAV NA below -17°C (2°F)  
DME/DME RNP-0.3 NA



EMERG SAFE ALT 100 NM 4700 FROM RW18



OKLAHOMA CITY, OKLAHOMA

35°25'N - 97°23'W

TINKER AFB (KTIK)

Orig 14SEP17

RNAV (GPS) RWY 18

SC-1, 31 DEC 2020 to 28 JAN 2021

SC-1, 31 DEC 2020 to 28 JAN 2021