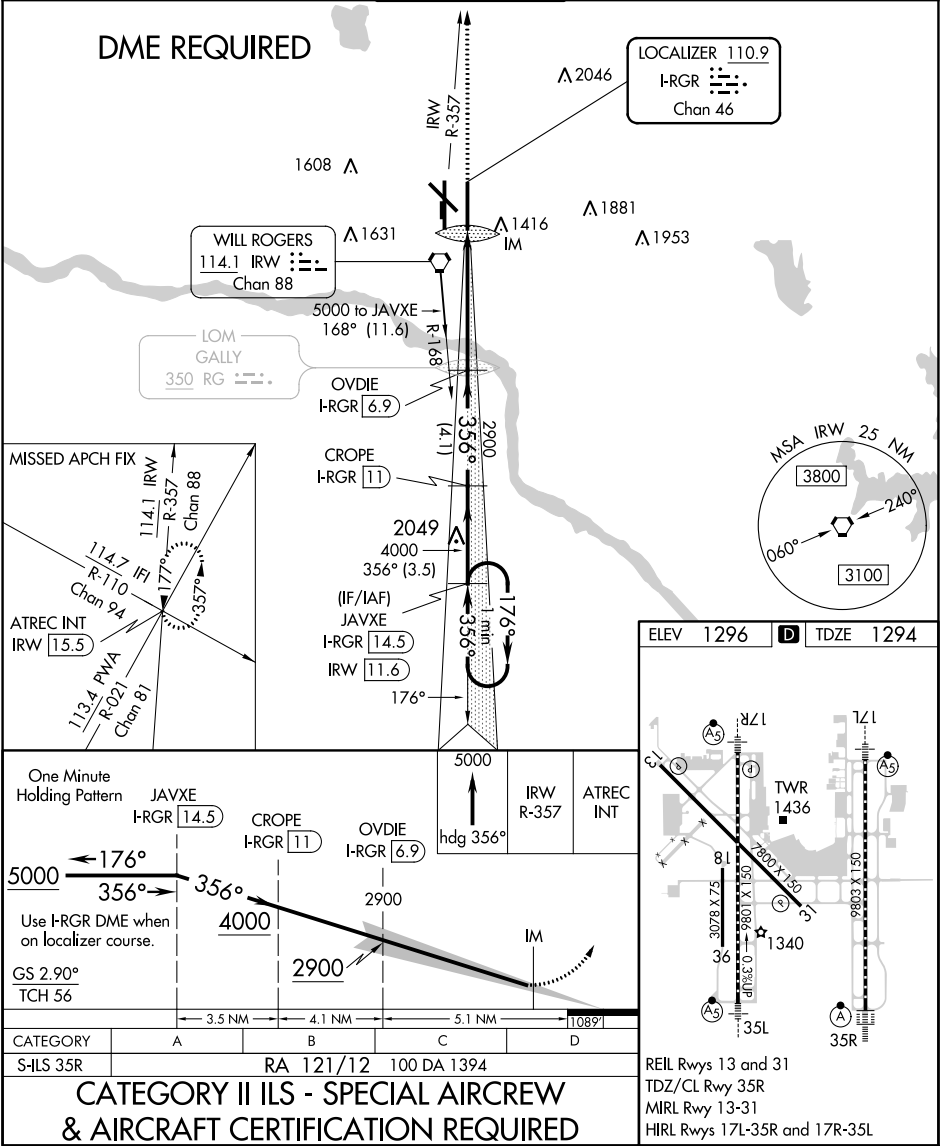


LOC/DME I-RGR 110.9 Chan 46	APP CRS 356°	Rwy Idg 9802 TDZE 1294 Apt Elev 1296
---	------------------------	---

ILS RWY 35R (CAT II)
WILL ROGERS WORLD (OKC)

<div><div><div><div><div></div><div></div></div><div><div></div><div></div></div></div><div><div></div><div></div></div><div>ASR</div></div><div>Simultaneous approach authorized. DME required.</div></div>			<div>ALSIF-2</div> <div><div><div></div><div></div></div><div><div></div><div></div></div></div>	MISSED APPROACH: Climb to 5000 on heading 356° and on IRW VORTAC R-357 to ATREC INT/IRW 15.5 DME and hold, continue climb-in-hold to 5000.
<div>D-ATIS</div> <div>125.85</div>	<div>OKE CITY APP CON</div> <div>124.6 266.8</div>	<div>ROGERS TOWER</div> <div>119.35 269.45</div>	<div>GND CON</div> <div>121.9 348.6</div>	<div>CLNC DEL</div> <div>124.35</div>



SC-1, 31 DEC 2020 to 28 JAN 2021

SC-1, 31 DEC 2020 to 28 JAN 2021