

LOC/DME I-OKC	APP CRS	Rwy Idg	9800
110.7	176°	TDZE	1282
Chan 44		Apt Elev	1296

ILS or LOC RWY 17R  
WILL ROGERS WORLD (OKC)

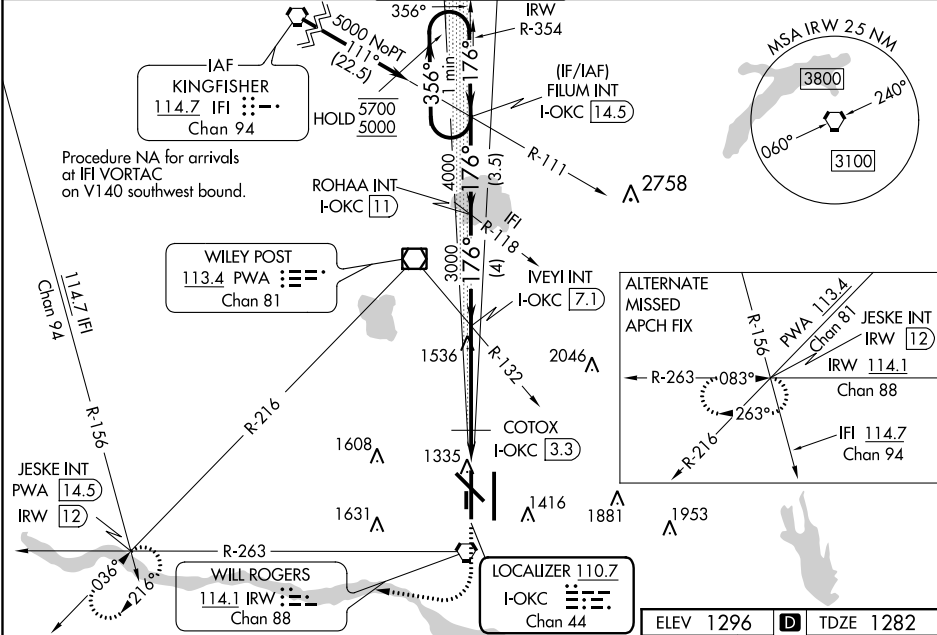
**ASR**

Simultaneous approach authorized. For inop ALS, increase S-ILS 17R Cat E visibility to RVR 4000 and S-LOC 17R Cats C/D/E visibility to 1 $\frac{1}{2}$  SM; increase COTOX FIX minimums S-LOC 17R Cats C/D/E visibility to RVR 5000.  
\*\*RVR 1800 authorized with use of FD or AP or HUD to DA.

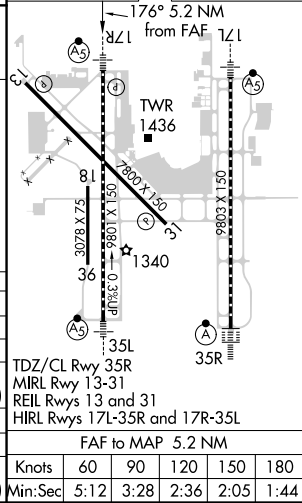
**MALSR**

MISSED APPROACH: Climb to 2000 then climbing right turn to 3000 on heading 311° and on PWA VOR/DME R-216 to JESKE INT/PWA 14.5 DME and hold.

D-ATIS	OKE CITY APP CON	ROGERS TOWER	GND CON	CLNC DEL
125.85	124.6 266.8	119.35 269.45	121.9 348.6	124.35



One Minute Holding Pattern					
VGSI and ILS glidepath not coincident (VGSI Angle 3.00/TCH 60).					
*LOC only.					
Use I-OKC DME when on localizer course.					
GS 3.00° TCH 55					
3.5 NM 4 NM 3.7 NM 0.6 0.9					
CATEGORY	A	B	C	D	E
S-ILS 17R**	1482/24		200 (200- $\frac{1}{2}$ )		
S-LOC 17R	1800/24	518 (600- $\frac{1}{2}$ )	1800/55 518 (600-1)		
CIRCLING	1800-1	504 (600-1)	1960-1 $\frac{3}{4}$ 664 (700-1 $\frac{3}{4}$ )	2000-2 $\frac{1}{4}$ 704 (800-2 $\frac{1}{4}$ )	2240-3 944 (1000-3)
COTOX FIX MINIMUMS					
S-LOC 17R	1620/24	338 (400- $\frac{1}{2}$ )	1620/26	338 (400- $\frac{1}{2}$ )	
CIRCLING	1740-1 444 (500-1)	1760-1 464 (500-1)	1960-1 $\frac{3}{4}$ 664 (700-1 $\frac{3}{4}$ )	2000-2 $\frac{1}{4}$ 704 (800-2 $\frac{1}{4}$ )	2240-3 944 (1000-3)



SC-1, 31 DEC 2020 to 28 JAN 2021

SC-1, 31 DEC 2020 to 28 JAN 2021