

LOC/DME I-RGR	APP CRS	Rwy Idg	9802
110.9	356°	TDZE	1294
Chan 46		Apt Elev	1296

ILS or LOC RWY 35R

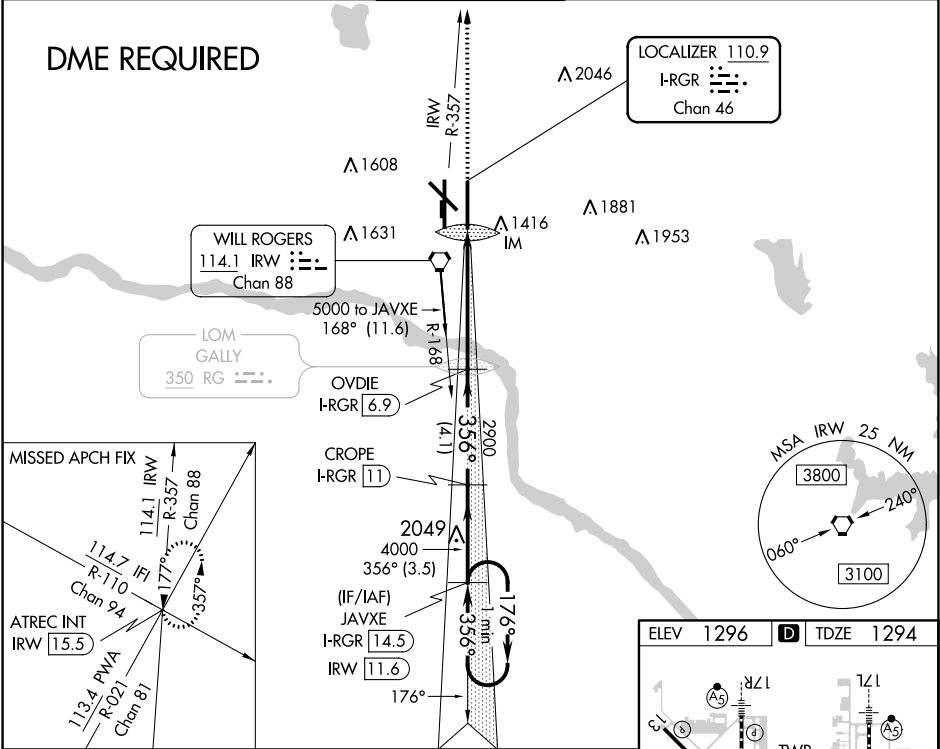
WILL ROGERS WORLD (OKC)

Simultaneous approach authorized. For inop ALS, increase S-ILS 35R Cat E visibility to RVR 4000 and S-LOC 35R Cats C/D/E visibility to RVR 5500. DME required.

ALSF-2

MISSED APPROACH: Climb to 5000 on heading 356° and on IRW VORTAC R-357 to ATREC INT/IRW 1.5.5 DME and hold, continue climb-in-hold to 5000.

D-ATIS	OKE CITY APP CON	ROGERS TOWER	GND CON	CLNC DEL
125.85	124.6 266.8	119.35 269.45	121.9 348.6	124.35



One Minute Holding Pattern

JAVXE I-RGR 14.5

CROPE I-RGR 11

OVDIE I-RGR 6.9

IRW R-357

ATREC INT

5000 ← 176°

356° → 356°

Use I-RGR DME when on localizer course.

GS 2.90°

TCH 56

3.5 NM

4.1 NM

4.1 NM

0.8

0.2

CATEGORY	A	B	C	D	E
S-ILS 35R	1494/18 200 (200-½)				
S-LOC 35R	1640/24	346 (400-½)	1640/30 346 (400-½)		
CIRCLING	1740-1 444 (500-1)	1760-1 464 (500-1)	1960-1¾ 664 (700-1¾)	2000-2¼ 704 (800-2¼)	2240-3 944 (1000-3)

