

WAAS CH 56202 W35A	APP CRS 356°	Rwy Idg 9800 TDZE 1276 Apt Elev 1296
----------------------------------------	------------------------	-----------------------------------------------------------------

RNAV (GPS) Y RWY 35L

WILL ROGERS WORLD (OKC)

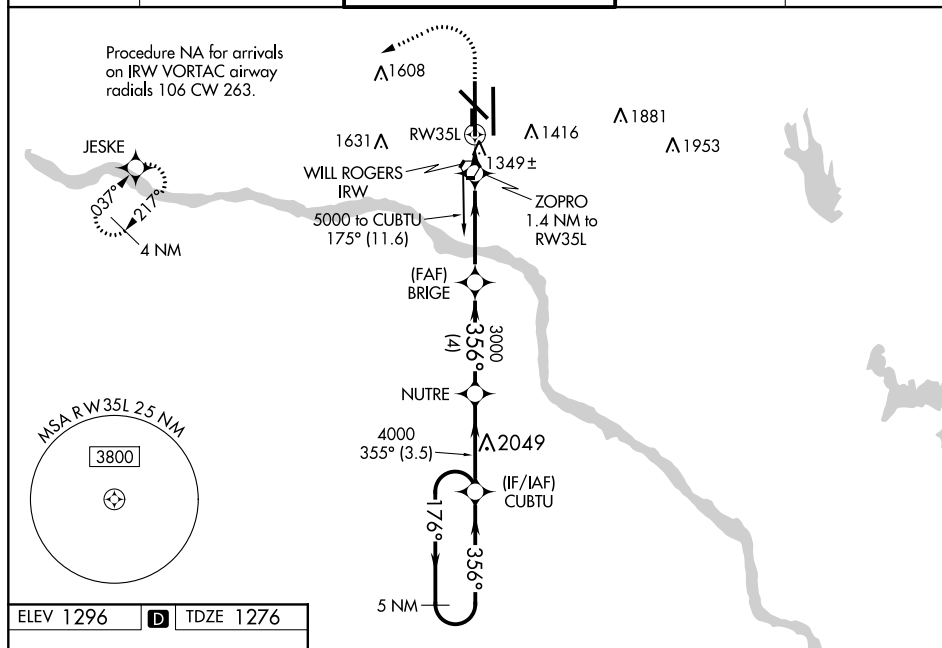
ASR For uncompensated Baro-VNAV systems, LNAV/VNAV NA below -12°C (11°F) or above 54°C (130°F), DME/DAE RNP-0.3 NA. For inop MALSR, increase LPV and LNAV/VNAV Cat C visibility to RVR 4000. Increase LNAV Cat A/B visibility to RVR 5500 and Cat C/D/E to RVR 5000. Simultaneous approach authorized with Rwy 35R. LNAV procedure NA during simultaneous operations. Use of FD or AP providing RNAV track guidance required during simultaneous operations. **RVR 1800 authorized with use of FD or AP or HUD to DA.

MALSR

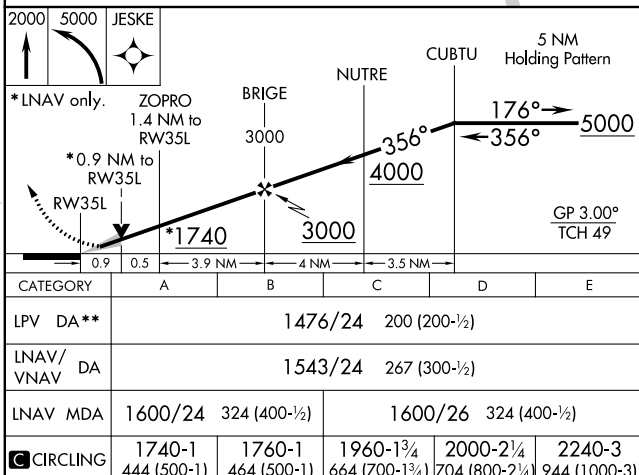
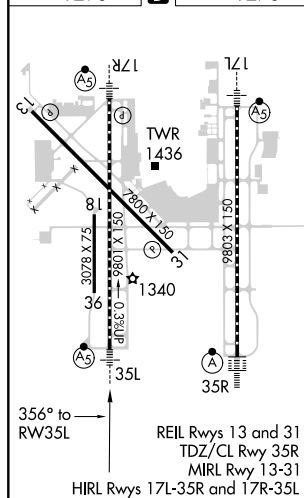
 

MISSED APPROACH: Climb to 2000 then climbing left turn to 5000 direct JESKE and hold.

D-ATIS 125.85	OKE CITY APP CON 124.6 266.8	ROGERS TOWER 119.35 269.45	GND CON 121.9 348.6	CLNC DEL 124.35
-------------------------	----------------------------------------	--------------------------------------	-------------------------------	---------------------------



ELEV 1296	D	TDZE 1276
-----------	----------	-----------



RNAV (GPS) Y RWY 35L