

VOR IRW 114.1 Chan 88	APP CRS 190°	Rwy Idg TDZE 1287 Apt Elev 1296
---	------------------------	---

VOR RWY 17L

WILL ROGERS WORLD (OKC)

⚠

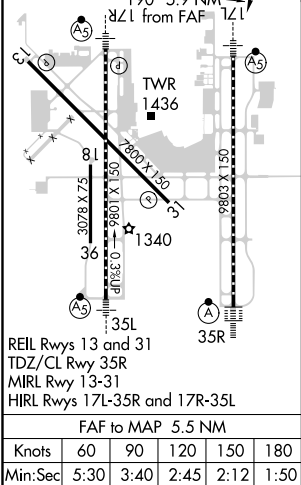
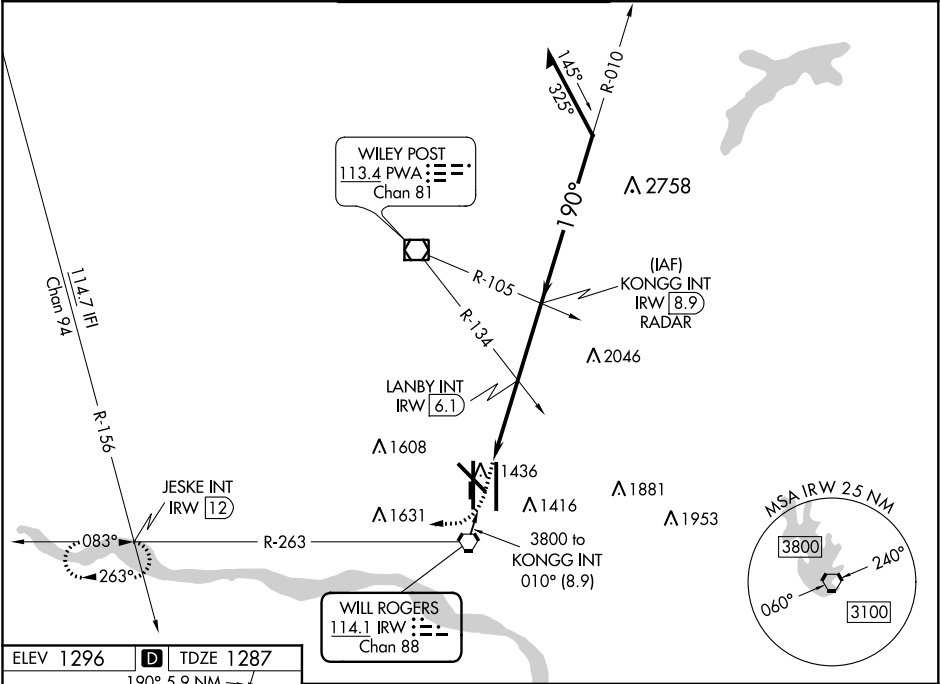
Cat E procedure turn NA. Inoperative table does not apply to S-17L all categories and LANBY FIX minimums S-17L Cat E; increase LANBY FIX ASR minimums Cat D visibility to RVR 6000 for inoperative MALSRS.

MALSRS

AS

MISSED APPROACH: Climb to 2000 then climbing right turn to 3100 via IRW VORTAC R-263 to JESKE INT/12 DME and hold.

D-ATIS 125.85	OKE CITY APP CON 124.6 266.8	ROGERS TOWER 119.35 269.45	GND CON 121.9 348.6	CLNC DEL 124.35
-------------------------	--	--------------------------------------	-------------------------------	---------------------------



2000

↑

3100

IRW R-263

JESKE INT

LANBY INT IRW 6.1

3.10°

TCH 59

2300

KONGG INT IRW 8.9 RADAR

010°

190°

3300

3800

Remain within 10 NM

IRW 3.4

0.5

2.7 NM

2.8 NM

CATEGORY	A	B	C	D	E
S-17L	2300/60 1013 (1100-1½)	2300-1½ 1013 (1100-1½)	2300-3	1013 (1100-3)	
CIRCLING	2300-1¼ 1004 (1100-1¼)	2300-1½ 1004 (1100-1½)	2300-3	1004 (1100-3)	
LANBY FIX MINIMUMS					
S-17L	1680/24 393 (400-½)		1680/50 393 (400-1)	1680-1½ 393 (400-1½)	
CIRCLING	1760-1	464 (500-1)	1960-1¾ 664 (700-1¾)	2000-2¼ 704 (800-2¼)	2240-3 944 (1000-3)