

WAAS CH 58303 W18A	APP CRS 180°	Rwy Idg 6015 TDZE 224 Apt Elev 224
----------------------------------------	------------------------	---------------------------------------------------------------

RNAV (GPS) RWY 18

STUTTART MUNI CARL HUMPHREY FIELD (SGT)

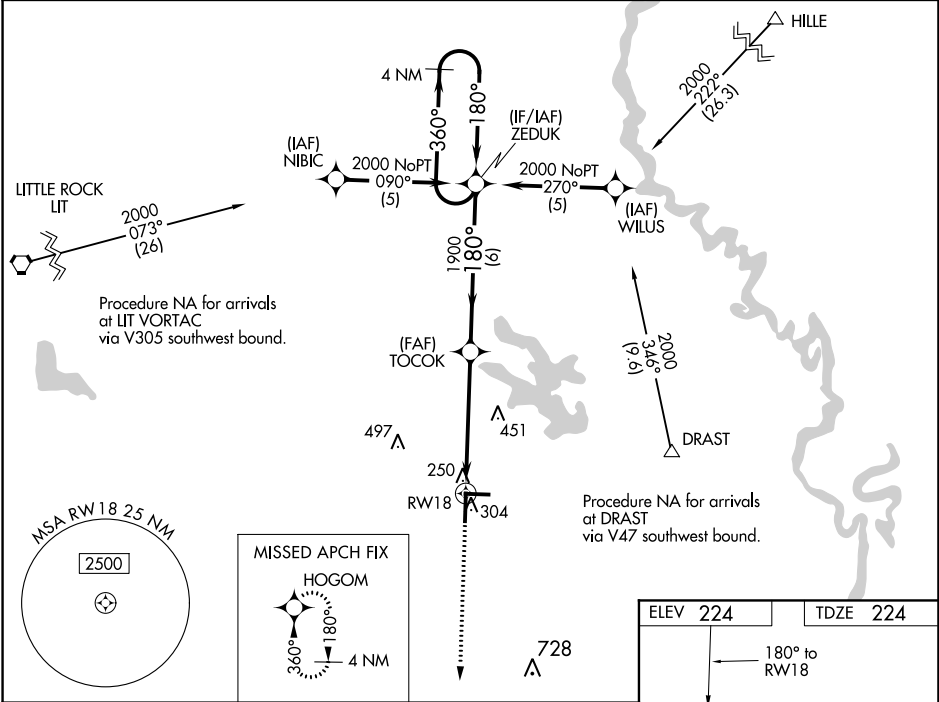
▼

▲

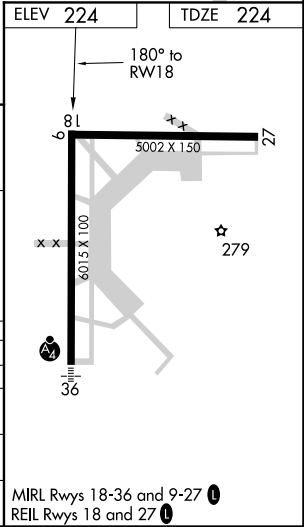
For uncompensated Baro-VNAV systems, LNAV/VNAV NA below -15°C (5°F) or above 48°C (118°F). DME/DME RNP-0.3 NA. When local altimeter setting not received, use Bill and Hillary Clinton National/Adams Field altimeter setting and increase all DAs 82 feet and all MDAs 100 feet. Baro-VNAV NA when using Bill and Hillary Clinton National/Adams Field altimeter setting. VDP NA when using Bill and Hillary Clinton National/Adams Field altimeter setting.

MISSED APPROACH: Climb to 2000 direct HOGOM and hold.

AWOS-3PT 119.025	LITTLE ROCK APP CON 135.4 353.6	CLNC DEL 123.7	UNICOM 122.8 (CTAF) 0
----------------------------	-------------------------------------------	--------------------------	---------------------------------



4 NM Holding Pattern ZEDUK				2000	HOGOM
GP 3.00° TCH 45				*1.1 NM to RW18	
180° to RW18				*LNAV only.	
6 NM				1.1 NM	
CATEGORY	A	B	C	D	
LPV DA	474-1				250 (300-1)
LNAV/VNAV DA	520-¾				296 (300-¾)
LNAV MDA	620-¾				396 (400-¾)
CIRCLING	660-1	680-1	680-1½	780-2	
	436 (500-1)	456 (500-1)	456 (500-1½)	556 (600-2)	



SC-1, 31 DEC 2020 to 28 JAN 2021

SC-1, 31 DEC 2020 to 28 JAN 2021