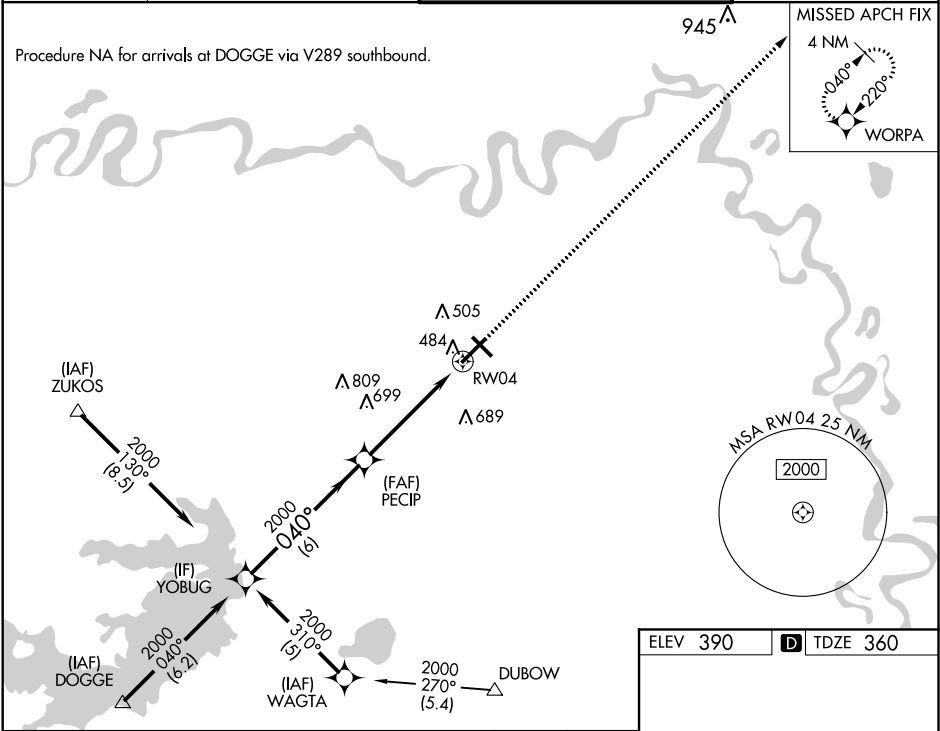


WAAS Ch 93899 W04A	APP CRS 040°	Rwy Idg 6601 TDZE 360 Apt Elev 390
--	------------------------	---

RNAV (GPS) RWY 4
TEXARKANA RGNL-WEBB FIELD (TXK)

<p>▼ DME/DME RNP-0.3 NA. Visibility reduction by helicopters NA. For uncompensated Baro-VNAV systems, LNAV/VNAV NA below -15°C (5°F) or above 48°C (118°F). When local altimeter setting not received, use J Lynn Helms Sevier County altimeter setting and increase all DA/MDA 100 feet, increase LPV and LNAV/VNAV all Cats visibility ¼ mile, LNAV and Circling Cat C and D visibility ½ mile. Baro-VNAV NA when using J Lynn Helms Sevier County altimeter setting.</p>	<p>MISSED APPROACH: Climb to 2100 direct WORPA and hold.</p>
--	---

ATIS 120.2	FORT WORTH CENTER 123.925 269.475	TEXARKANA TOWER ★ 123.875 (CTAF) 0 235.625	GND CON 119.225
----------------------	---	--	---------------------------



Procedure YOBUG		PECIP		2100	WORPA
2000		040°		2000	
GP 3.00°		TCH 52		RW04	
6 NM		5 NM			
CATEGORY	A	B	C	D	
LPV DA	613-1		253 (300-1)		
LNAV/VNAV DA	866-1¾		506 (500-1¾)		
LNAV MDA	900-1	540 (600-1)	900-1½	900-1¾	
			540 (600-1½)	540 (600-1¾)	
CIRCLING	900-1¾		510 (600-1)		
			1000-2		
			610 (700-2)		

