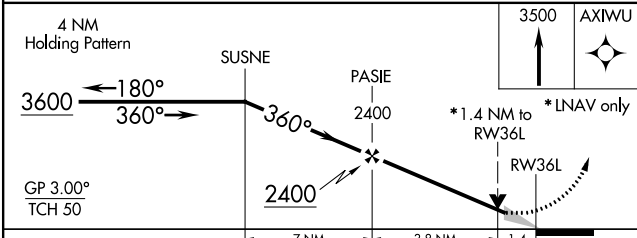
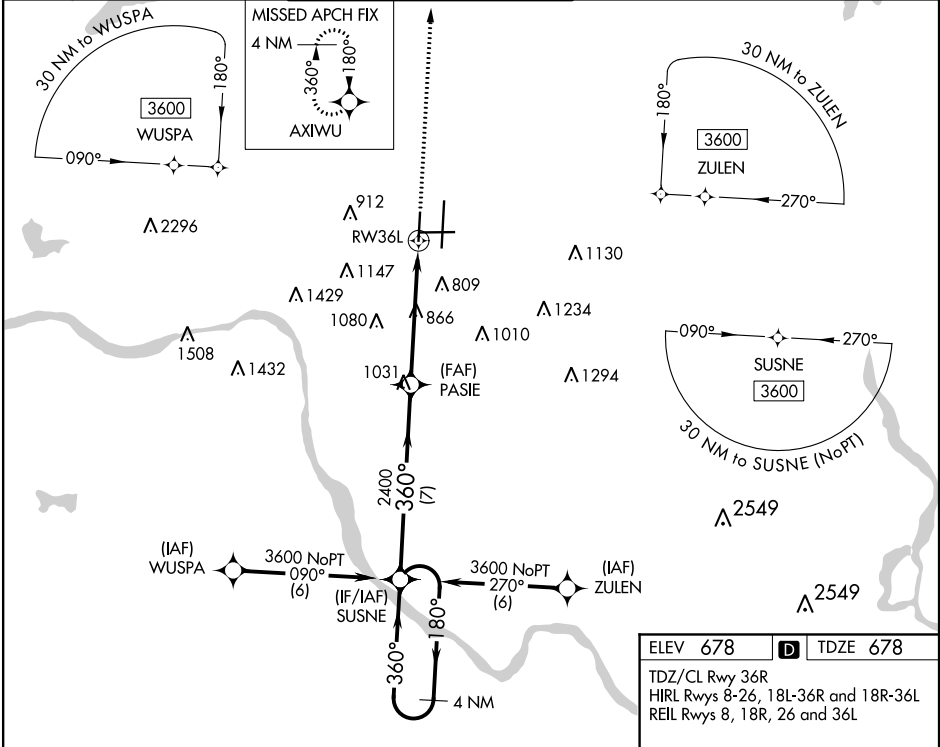


APP CRS	Rwy Idg	6101
360°	TDZE	678
	Apt Elev	678

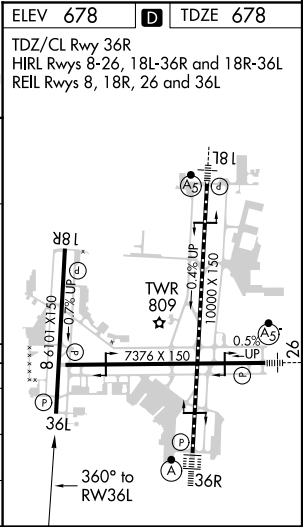
RNAV (GPS) RWY 36L  
TULSA INTL (TUL)

<p><b>ASR</b></p> <p>For uncompensated Baro-VNAV systems, LNAV/VNAV NA below -13°C (9°F) or above 54°C (130°F). DME/DME RNP-0.3 NA. Simultaneous approach authorized with ILS or LOC Rwy 36R and ILS Rwy 36R (Cat II). LNAV procedure NA during simultaneous operations. Use of FD or AP providing RNAV track guidance required during simultaneous operations.</p>	<p><b>MISSED APPROACH:</b> Climb to 3500 direct AXIWU and hold.</p>
---	---

D-ATIS <b>124.9 377.2</b>	TULSA APP CON <b>124.0 338.3</b>	TULSA TOWER <b>121.2 310.8</b> (Rwys 18L-36R, 8-26) <b>118.7 257.8</b> (Rwy 18R-36L)	GND CON <b>121.9 348.6</b>	CLNC DEL <b>134.05 284.7</b>
------------------------------	-------------------------------------	--	-------------------------------	---------------------------------



CATEGORY	A	B	C	D
LNAV/VNAV DA	1105-1 3/8 427 (500-1 3/8)			
LNAV MDA	1180-1 502 (600-1)		1180-1 3/8 502 (600-1 3/8)	
CIRCLING	1180-1 502 (600-1)		1520-2 1/2 842 (900-2 1/2)	1520-2 3/4 842 (900-2 3/4)



SC-1, 31 DEC 2020 to 28 JAN 2021

SC-1, 31 DEC 2020 to 28 JAN 2021