

WAAS CH 82214 W36A	APP CRS 360°	Rwy Idg 10000 TDZE 650 Apt Elev 678
--	------------------------	--

RNAV (GPS) RWY 36R
TULSA INTL (TUL)

ASR

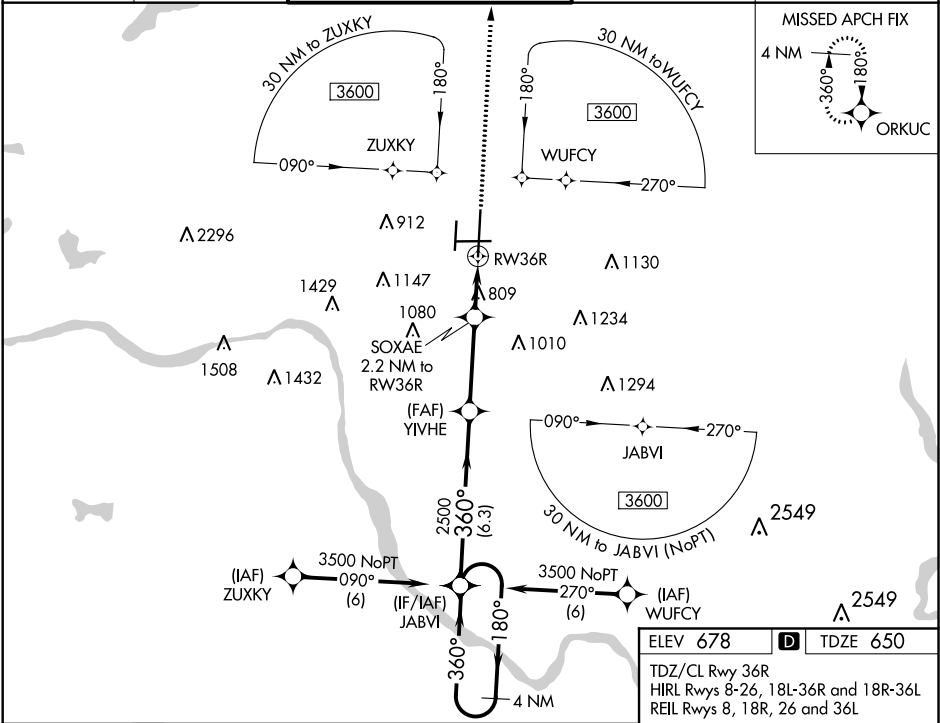
For uncompensated Baro-VNAV systems, LNAV/VNAV NA below -13°C (9°F) or above 54°C (130°F). Circling NA for Cat E south of Rwy 8-26. DME/DME RNP-0.3 NA.
For inop ALSF-2, increase LPV Cat E visibility to RVR 4000, LNAV/VNAV all Cats visibility to 1½ mile, and LNAV Cats C/D/E visibility to 1½ mile.

ALSF-2

MISSED APPROACH:

Climb to 3500 direct ORKUC and hold.

D-ATIS 124.9 377.2	TULSA APP CON 124.0 338.3	TULSA TOWER 121.2 310.8 (Rwys 18L-36R, 8-26) 118.7 257.8 (Rwy 18R-36L)	GND CON 121.9 348.6	CLNC DEL 134.05 284.7
------------------------------	-------------------------------------	--	-------------------------------	---------------------------------



4 NM Holding Pattern JABVI

VGSI and RNAV glidepath not coincident (VGSI Angle 3.00/TCH 57).

3500 ORKUC

GP 3.00° TCH 52

YIVHE 2500

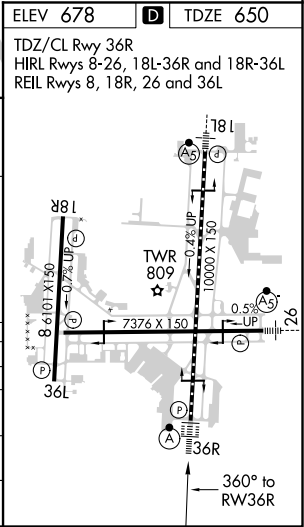
SOXAE 2.2 NM to RW36R

*1.3 NM to RW36R

RW36R

*1400

CATEGORY	A	B	C	D	E
LPV DA	850/18 200 (200-½)				
LNAV/VNAV DA	1145-1¼ 495 (500-1¼)				
LNAV MDA	1120/24 470 (500-½)	1120/50 470 (500-1)			
CIRCLING	1120-1 442 (500-1)	1160-1 482 (500-1)	1520-2½ 842 (900-2½)	1520-2¾ 842 (900-2¾)	1520-3 842 (900-3)



SC-1, 31 DEC 2020 to 28 JAN 2021

SC-1, 31 DEC 2020 to 28 JAN 2021