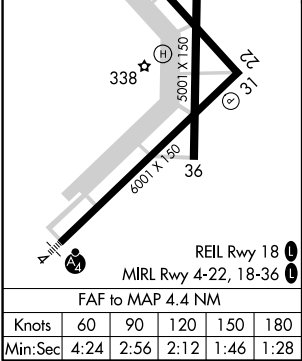
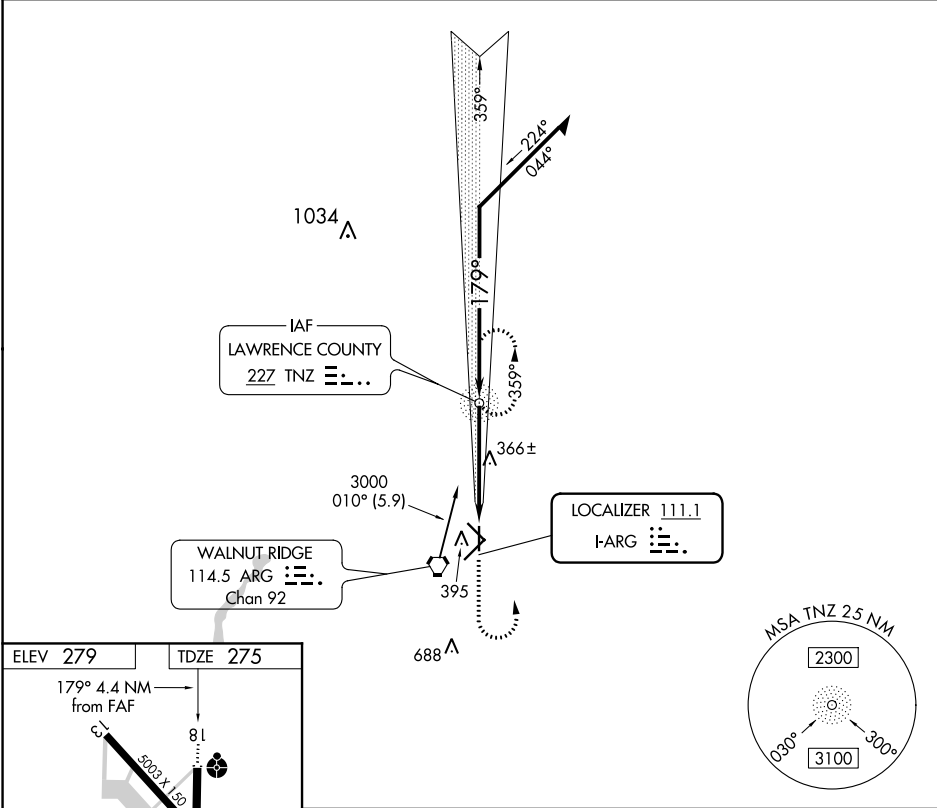


LOC I-ARG	APP CRS	Rwy Idg	5001
111.1	179°	TDZE	275
		Apt Elev	279

LOC RWY 18  
WALNUT RIDGE RGNL (ARG)

ADF required.	ODALS	MISSED APPROACH: Climb to 900 then climbing left turn to 1700 direct TNZ NDB and hold.
▼ ▲ NA	Inop table does not apply to S-18 Cat D.	

AWOS-3PT 135.925	MEMPHIS CENTER 120.075 289.4	UNICOM 122.8 (CTAF) 0
---------------------	---------------------------------	--------------------------



	900	1700	TNZ	TNZ NDB	Remain within 10 NM
	↑	↶	○	359°	3000
				179°	1700
				2.98°	TCH 45
				4.4 NM	
CATEGORY	A	B	C	D	
S-18	620-3/4	345 (400-3/4)	620-7/8 345 (400-7/8)	620-1 1/4 345 (400-1 1/4)	
CIRCLING	760-1	481 (500-1)	760-1 1/2 481 (500-1 1/2)	840-2 561 (600-2)	

SC-1, 31 DEC 2020 to 28 JAN 2021

SC-1, 31 DEC 2020 to 28 JAN 2021