

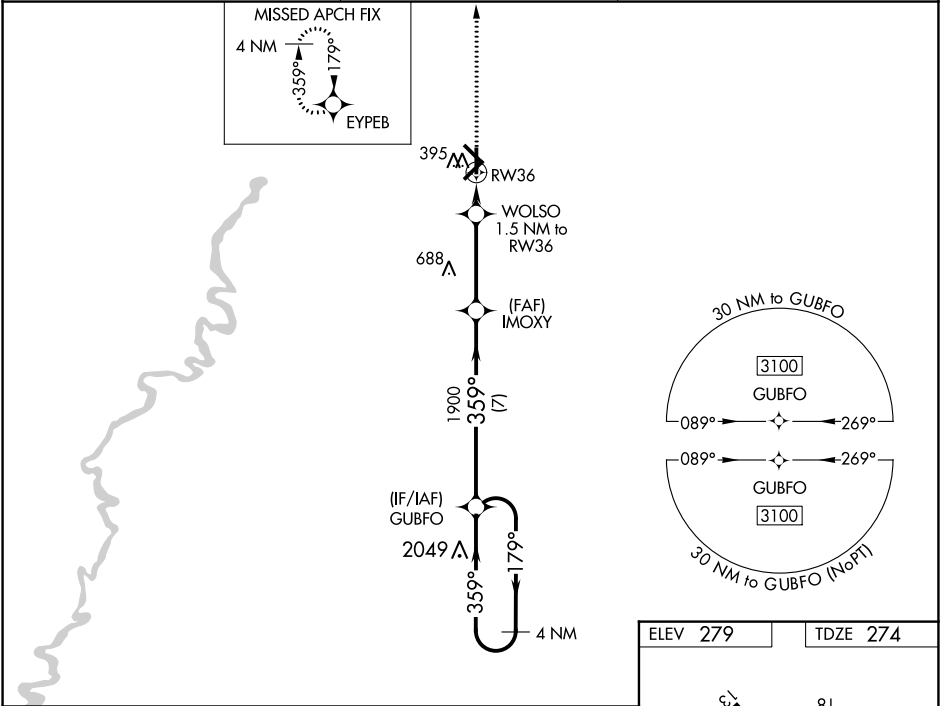
WAAS CH <b>45825</b> <b>W36A</b>	APP CRS <b>359°</b>	Rwy Idg TDZE Apt Elev	<b>5001</b> <b>274</b> <b>279</b>
--	------------------------	-----------------------------	---

RNAV (GPS) RWY 36  
WALNUT RIDGE RGNL (ARG)

**Baro-VNAV NA** when using Jonesboro altimeter setting. For uncompensated Baro-VNAV systems, LNAV/VNAV NA below -15°C (5°F) or above 42°C (107°F). DME/DME RNP-0.3 NA. When local altimeter setting not received, use Jonesboro altimeter setting and increase all DA 54 feet and all MDA 60 feet; increase LPV all Cats and LNAV/VNAV all Cats visibility 1/8 mile and LNAV Cat C and D visibility 1/4 mile.

**MISSED APPROACH:**  
Climb to 2700 direct EYPEB and hold.

AWOS-3PT <b>135.925</b>	MEMPHIS CENTER <b>120.075 289.4</b>	UNICOM <b>122.8 (CTAF) 0</b>
----------------------------	--	---------------------------------



2700 EYPEB

\*LNAV only.

WOLSO 1.5 NM to RW36

IMOXY 1900

GUBFO 4 NM Holding Pattern

179° → 3100

← 359°

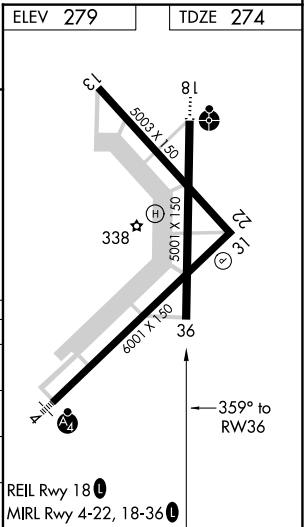
GP 3.00° TCH 45

\*780

1900

1.5 NM 3.5 NM 7 NM

CATEGORY	A	B	C	D
LPV DA		474-1	200 (200-1)	
LNAV/VNAV DA		574-1	300 (300-1)	
LNAV MDA	660-1	386 (400-1)	660-1 1/8	386 (400-1 1/8)
CIRCLING	760-1	481 (500-1)	760-1 1/2 481 (500-1 1/2)	840-2 561 (600-2)



SC-1, 31 DEC 2020 to 28 JAN 2021

SC-1, 31 DEC 2020 to 28 JAN 2021