


ALTUS, OKLAHOMA

ILS or RNAV (GPS) Y RWY 35L

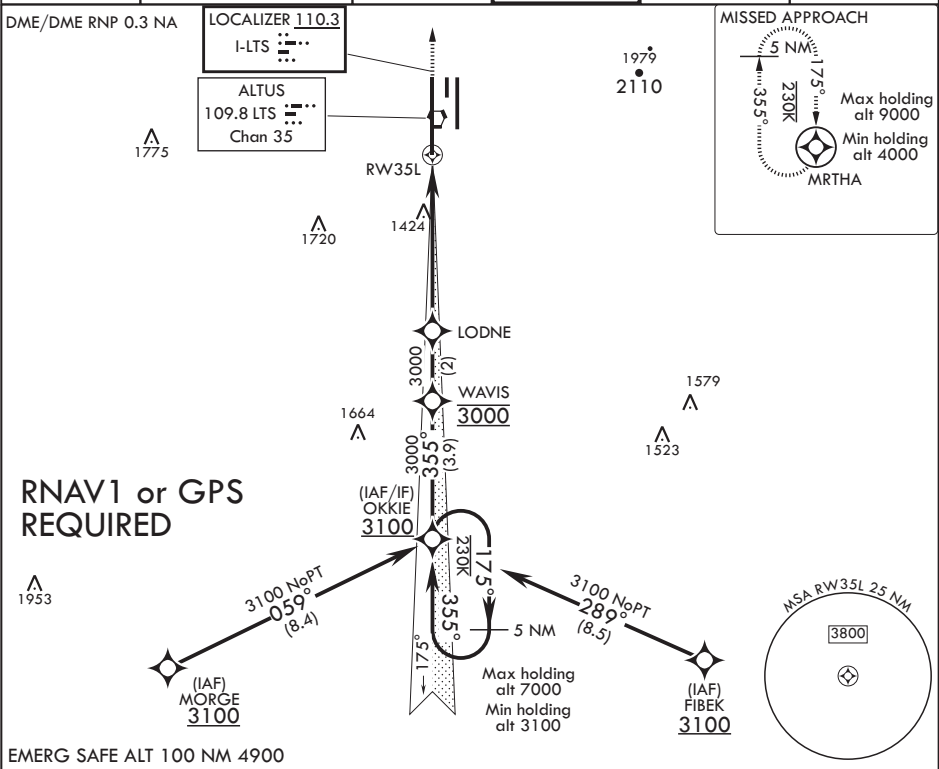
LOC I-LTS 110.3	APCH CRS 355°	Rwy Idg 13,440
		TDZE 1354
		Arpt Elev 1382

AL-482 (USAF)

ALTUS AFB (KLTS)

⚠ * When ALS inop, increase CAT ABCDE RVR to 40, vis to 3/4 mile; RVR 18 authorized with use of FD or AP or HUD to DA. ** When ALS inop, increase CAT ABCDE RVR to 55, vis to 1 mile. *** Circling not authorized W of Rwy 17R-35L.	ALSF-1 	MISSED APPROACH: Climb to 4000 direct MRTHA and hold.
--	---	---

ATIS ★ 109.8 273.5	FORT WORTH CENTER 133.5 350.35	APP CON 125.1 353.7	TOWER ★ 119.65 254.4	GND CON 121.85 275.8	CLNC DEL 120.65 284.7
------------------------------	--	-------------------------------	--------------------------------	--------------------------------	---------------------------------



ALTUS, OKLAHOMA

34°40'N - 99°16'W

ALTUS AFB (KLTS)

Amdt 1 20JUN19

ILS or RNAV (GPS) Y RWY 35L

SC-1, 31 DEC 2020 to 28 JAN 2021

SC-1, 31 DEC 2020 to 28 JAN 2021