

ALTUS, OKLAHOMA

ILS Z or LOC RWY 35L

LOC I-LTS <u>110.3</u>	APCH CRS 355°	Rwy Idg 13,440 TDZE 1354 Arpt Elev 1382
----------------------------------	-------------------------	--

AL-482 [USAF]

ALTUS AFB (KLTS)

T * When ALS inop, increase RVR to 40 and vis to $\frac{3}{4}$ mile;
RVR 18 authorized with use of FD or AP or HUD to DA.
** When ALS inop, increase CAT ABCDE RVR to 55
and vis to 1 mile.



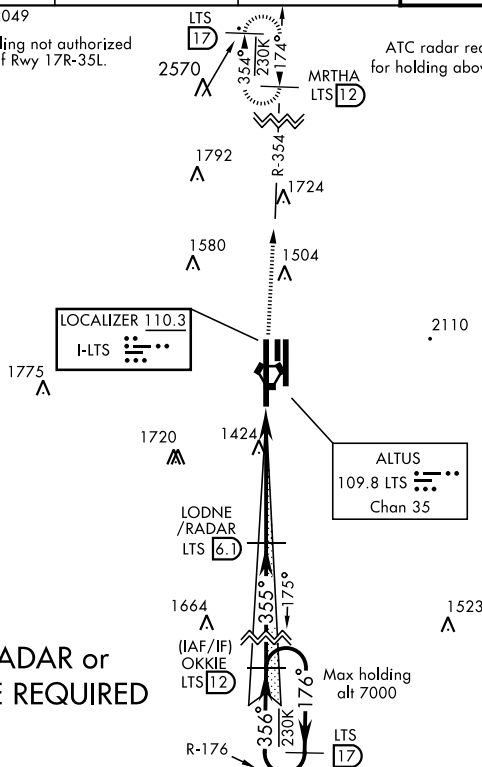
MISSED APPROACH: Climb to 4000, intercept
LTS VORTAC R-354 to MRTHA and hold.

ATIS ★ 109.8 273.5	FORT WORTH CENTER 133.5 350.35	ALTUS APP CON 125.1 353.7	ALTUS TOWER ★ 119.65 254.4	GND CON 121.85 275.8	CLNC DEL 120.65 284.7
-----------------------	-----------------------------------	------------------------------	-------------------------------	-------------------------	--------------------------

A 2049

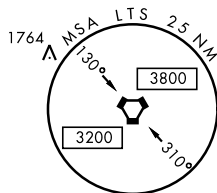
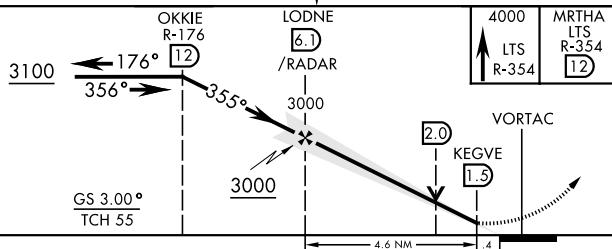
*** Circling not authorized
W of Rwy 17R-35L.

ATC radar required
for holding above 4000



DME REQUIRED

EMERG SAFE ALT 100 NM 4900



FAF to MAP 4.6 NM					
Knots	60	90	120	150	180
Min:Sec	4:36	3:04	2:18	1:50	1:32

ALTUS, OKLAHOMA

34°40'N-99°16'W

ALTUS AFB (KLTS)

Amdt 1 16JUL20

ILS Z or LOC RWY 35L

SC-1, 31 DEC 2020 to 28 JAN 2021

SC-1, 31 DEC 2020 to 28 JAN 2021