

ALTUS, OKLAHOMA

RNAV (RNP) X RWY 35L

APCH CRS 355°	Rwy Idg	13,440
	TDZE	1354
	Arpt Elev	1382

AL-482 (USAF)

ALTUS AFB (KLTS)

T * When ALS inop, increase RVR to 45, vis to 7/8 mile.
** When ALS inop. increase RVR to 55, vis to 1 mile.

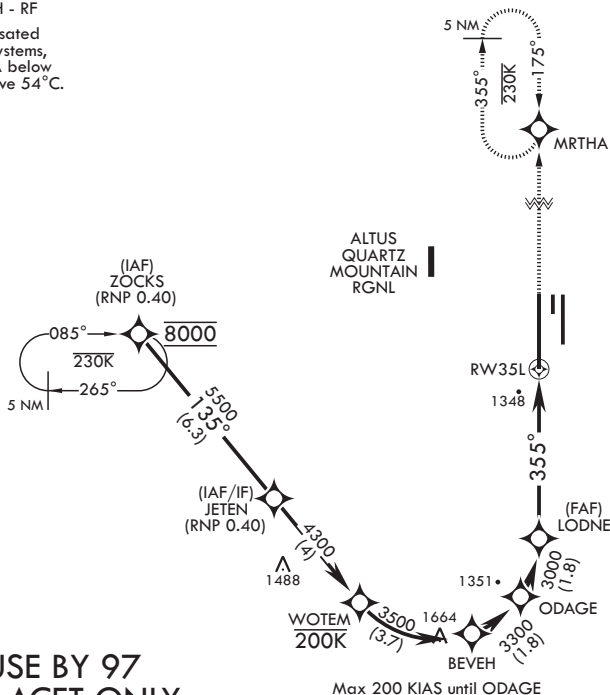
ALSF-1

MISSED APPROACH: Climb to 4000 on track 355° to MRTHA and hold.

ATIS★ 109.8 273.5	APP CON 125.1 353.7	TOWER★ 119.65 254.4	GND CON 121.85 275.8	CLNC DEL 120.65 284.7
----------------------	------------------------	------------------------	-------------------------	--------------------------

RNP AR APCH - RF

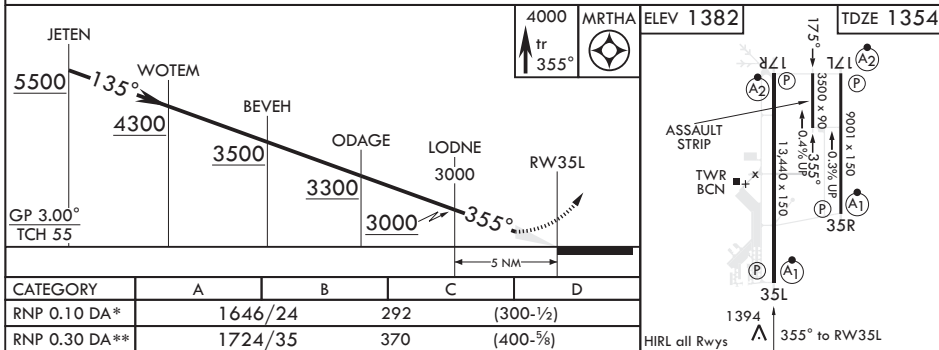
For uncompensated Baro-VNAV systems, procedure NA below -17°C or above 54°C .



FOR USE BY 97
AMW ACFT ONLY

**AUTHORIZATION
REQUIRED**

EMERG SAFE ALT 100 NM 4900



ALTUS, OKLAHOMA

34°40'N - 99°16'W

ALTUS AFB (KLTS)

Orig 05NOV20

RNAV (RNP) X RWY 35L