

ALTUS, OKLAHOMA

20142

VOR or TACAN RWY 35R

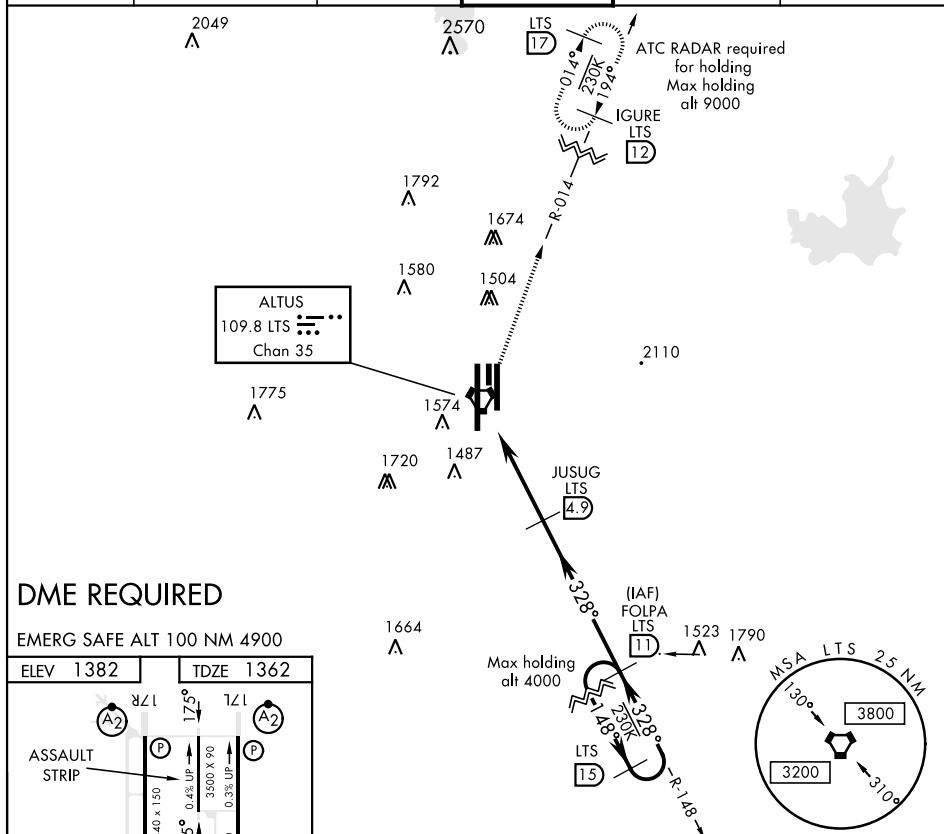
VORTAC LTS 109.8 Chan 35	APCH CRS 328°	Rwy Idg TDZE Arpt Elev 9001 1362 1382
--	-------------------------	---

AL-482 [USAF]

ALTUS AFB (KLTS)

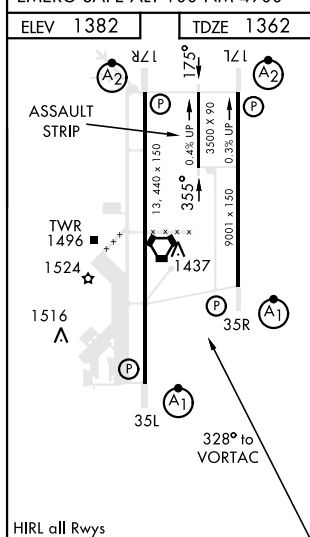
<p>⚠ * When ALS inop, increase CAT ABCDE RVR to 55 and vis to 1 mile.</p> <p>** Circling not authorized W of Rwy 17R-35L.</p>	<p>ALS-F-1</p> <p>(A1)</p>	<p>MISSED APPROACH: Climb to 2000 then climbing right turn to 4000, intercept LTS VORTAC R-014 to IGRUE and hold.</p>
--	-----------------------------------	---

ATIS ★ 109.8 273.5	FORT WORTH CENTER 133.5 350.35	ALTUS APP CON 125.1 353.7	ALTUS TOWER★ 119.65 254.4	GND CON 121.85 275.8	CLNC DEL 120.65 284.7
------------------------------	--	-------------------------------------	-------------------------------------	--------------------------------	---------------------------------



DME REQUIRED

EMERG SAFE ALT 100 NM 4900



2000	4000	IGRUE LTS 12	FOLPA R-148 11	JUSUG 4.9	328°	148°	4000	3100
VORTAC	HOSDO 1.3	VORTAC	HOSDO 1.3	VORTAC	HOSDO 1.3	VORTAC	HOSDO 1.3	VORTAC
8 NM	3.6 NM	8 NM	3.6 NM	8 NM	3.6 NM	8 NM	3.6 NM	8 NM
CATEGORY	A	B	C	D	E			
S-35R*	1720/30	358 (400-5%)	1720/40	358	(400-3%)			
** CIRCLING	1780-1	1840-1	1860-1½	1940-2	2100-2½			
	398 (400-1)	458 (500-1)	478 (500-1½)	558 (600-2)	718 (800-2½)			

ALTUS, OKLAHOMA

34°40'N-99°16'W

ALTUS AFB (KLTS)

Amtd 2 12SEP19

VOR or TACAN RWY 35R

SC-1, 31 DEC 2020 to 28 JAN 2021