

WAAS  
CH **72818**  
**W35A**

APP CRS  
**354°**

Rwy Idg  
TDZE  
Apt Elev  
**5593**  
**1067**  
**1073**

**RNAV (GPS) RWY 35**

SHAWNEE RGNL (SNL)

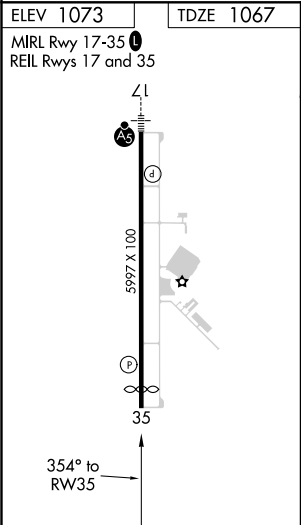
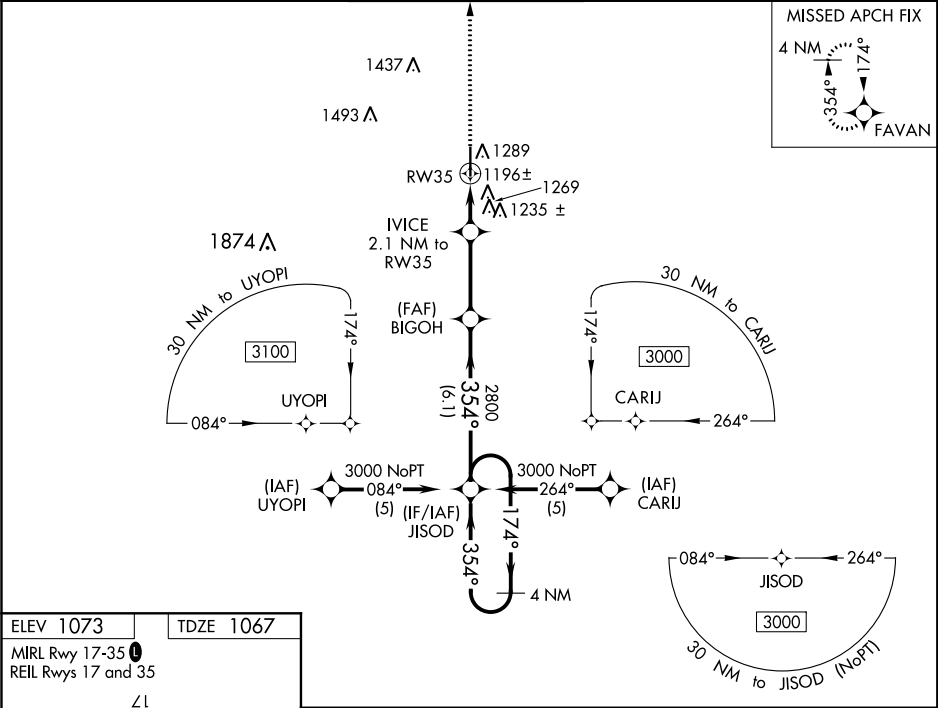
▼

▲

Baro-VNAV NA when using Seminole altimeter setting. For uncompensated Baro-VNAV systems, LNAV/VNAV NA below -17°C (2°F) or above 54°C (130°F). DME/DME RNP-0.3 NA. When local altimeter setting not received, use Seminole altimeter setting: increase LPV DA to 1357 feet; increase LNAV/VNAV DA to 1605 feet and visibility ¼ SM; increase all MDAs 40 feet and visibility Cat C ¼ SM.

MISSED APPROACH:  
Climb to 3000 direct  
FAVAN and hold.

AWOS-3 <b>118.275</b>	OKE CITY APP CON <b>120.45 288.325</b>	UNICOM <b>122.7 (CTAF)</b>
--------------------------	---	-------------------------------



3000

FAVAN

VGSI and RNAV glidepath not coincident  
(VGSI Angle 3.00/TCH 42).

4 NM Holding Pattern

\*LNAV only.

IVICE 2.1 NM to RW35

BIGOH 2800

1780\*

174°

354°

3000

GP 3.00° TCH 47

2.1

3.1 NM

6.1 NM

CATEGORY	A	B	C	D
LPV DA	1317-1	250 (300-1)		NA
LNAV/VNAV DA	1565-1¾	498 (500-1¾)		NA
LNAV MDA	1520-1	453 (500-1)	1520-1¼ 453 (500-1¼)	NA
CIRCLING	1600-1	527 (600-1)	1640-1½ 567 (600-1½)	NA