

▼

▲

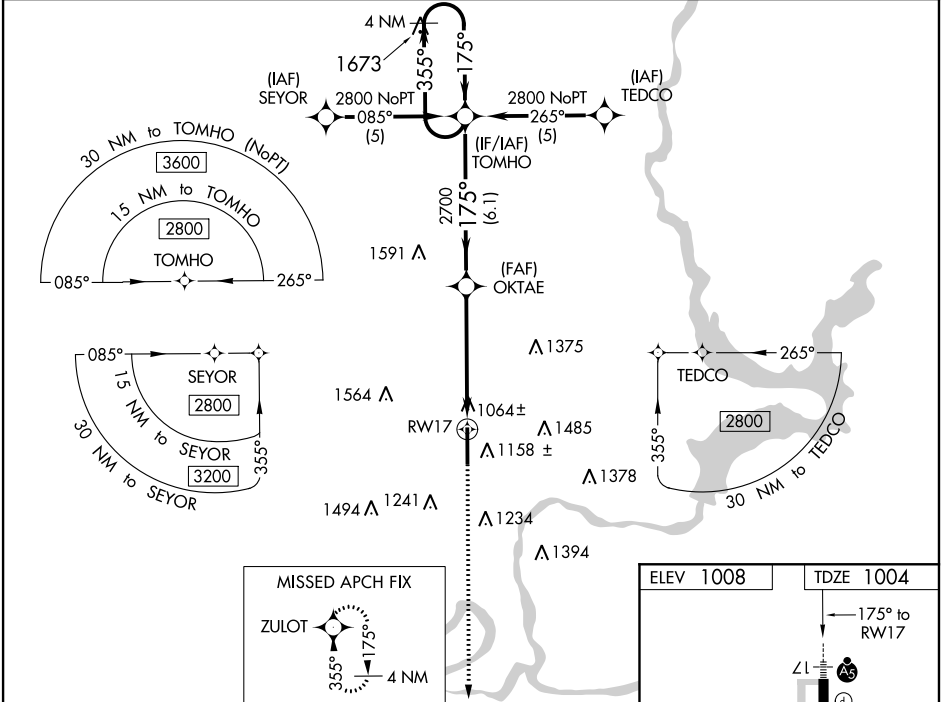
For inop MALSR, increase LPV visibility to 1 mile. For uncompensated Baro-VNAV systems, LNAV/VNAV NA below -17°C (2°F) or above 47°C (116°F). DME/DME RNP-0.3 NA.

When local altimeter setting not received use Winfield-Arkansas City altimeter setting and increase all DA 82 feet and MDA 100 feet; increase LPV all Cats, LNAV/VNAV all Cats LNAV Cat C and Cat D and Circling Cat C visibility ¼ mile. VDP NA when using Winfield-Arkansas City altimeter setting. For inop MALSR when using Winfield-Arkansas City altimeter setting, increase LPV and LNAV/VNAV visibility ¼ mile all Cats, increase LNAV Cats C and D visibility ¼ mile. Baro-VNAV NA when using Winfield-Arkansas City altimeter setting.

MALSR

MISSED APPROACH:
Climb to 2700 direct ZULOT and hold.

ASOS 134.075	KANSAS CITY CENTER 127.8 319.1	UNICOM 123.0 (CTAF) 0
-----------------	-----------------------------------	--------------------------



4 NM Holding Pattern		TOMHO		2700 ZULOT	
2800 ← 355°		→ 175°		*1.6 NM to RWY17	
GP 3.00° TCH 48		OKTAE		*LNAV only.	
		2700		RWY17	
		6.1 NM		3.5 NM	
				1.6 NM	
CATEGORY	A	B	C	D	
LPV DA		1279-1/2	275 (300-1/2)		
LNAV/VNAV DA		1330-3/4	326 (400-3/4)		
LNAV MDA	1540-1/2	536 (600-1/2)	1540-1 536 (600-1)	1540-1 1/4 536 (600-1 1/4)	
CIRCLING	1540-1	532 (600-1)	1560-1 1/2 552 (600-1 1/2)	1560-2 552 (600-2)	

ELEV 1008

TDZE 1004

175° to RWY17

7201 X 150

1050

35

HIRL Rwy 17-35 0