

WAAS CH 93808 W35A	APP CRS 355°	Rwy Idg TDZE Apt Elev	7201 1008 1008
--	------------------------	-----------------------------	---

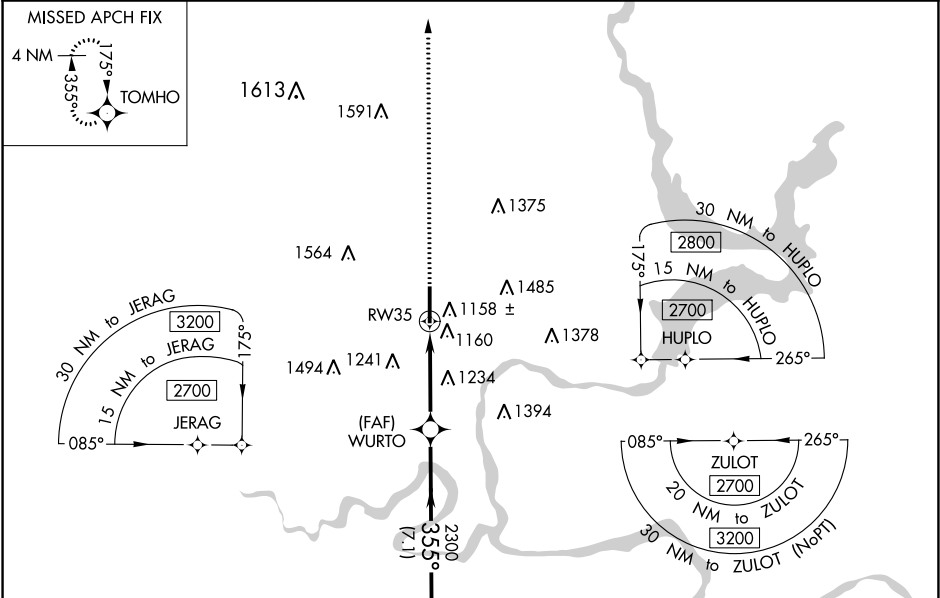
RNAV (GPS) RWY 35
PONCA CITY RGNL (PNC)

⚠ For uncompensated Baro-VNAV systems, LNAV/VNAV NA below -17°C (2°F) or above 46°C (114°F). DME/DME RNP-0.3 NA. When local altimeter setting not received use Winfield-Arkansas City altimeter setting and increase all DA 82 feet and MDA 100 feet; increase Cat C Circling visibility ¼ mile, increase LNAV Cat C, D visibility ¼ mile, LPV and LNAV/VNAV all Cats visibility ¼ mile. Baro-VNAV NA when using Winfield-Arkansas City altimeter setting. Visibility reduction by helicopters NA.

ODALS

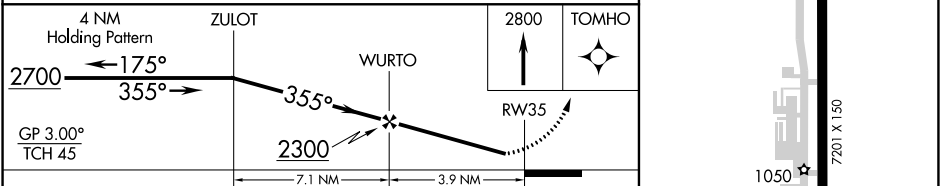
MISSED APPROACH:
Climb to 2800 direct TOMHO and hold.

ASOS 134.075	KANSAS CITY CENTER 127.8 319.1	UNICOM 123.0 (CTAF)
------------------------	--	-------------------------------



ELEV 1008 **TDZE 1008**

HIRL Rwy 17-35



CATEGORY	A	B	C	D
LPV DA		1295-1	287 (300-1)	
LNAV/VNAV DA		1478-1¾	470 (500-1¾)	
LNAV MDA	1540-1	532 (600-1)	1540-1½ 532 (600-1½)	1540-1¾ 532 (600-1¾)
CIRCLING	1540-1	532 (600-1)	1560-1½ 552 (600-1½)	1560-2 552 (600-2)

SC-1, 31 DEC 2020 to 28 JAN 2021

SC-1, 31 DEC 2020 to 28 JAN 2021