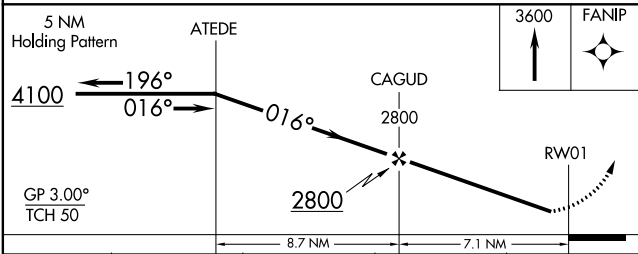
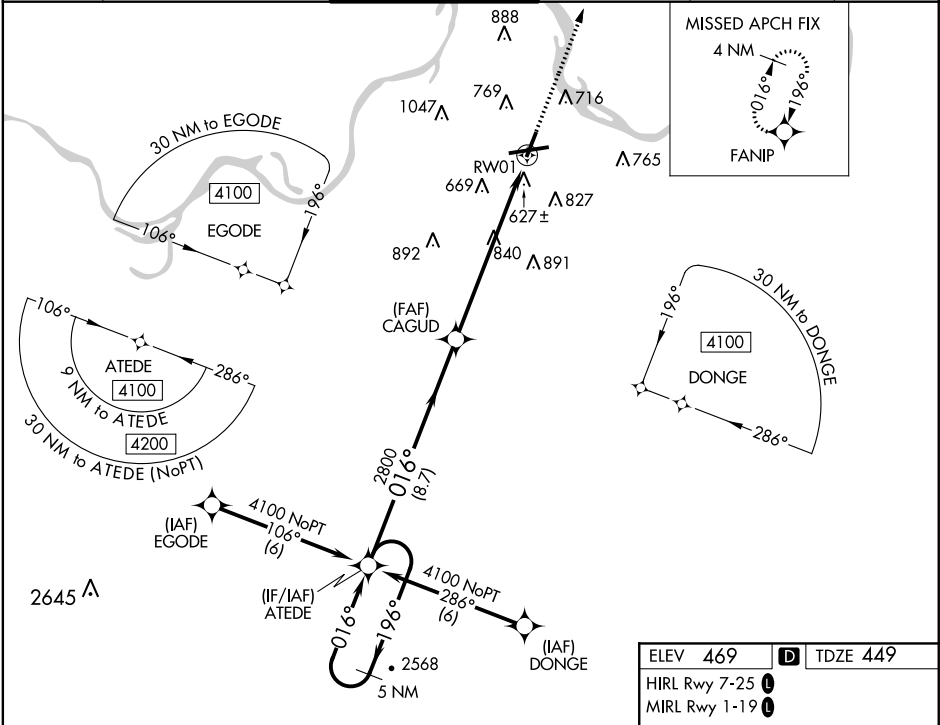


WAAS CH 58217 W01A	APP CRS 016°	Rwy Idg TDZE Apt Elev	5001 449 469
--	------------------------	-----------------------------	---

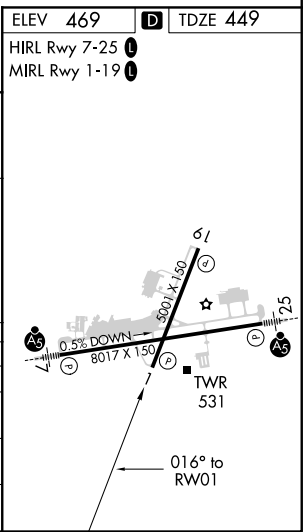
RNAV (GPS) RWY 1
FORT SMITH RGNL (FSM)

RNP APCH.	For uncompensated Baro-VNAV systems, LNAV/VNAV NA below -15°C or above 48°C. Rwy 1 helicopter visibility reduction below 3/4 SM NA.	MISSED APPROACH: Climb to 3600 direct FANIP and hold, continue climb-in-hold to 3600.
-----------	---	---

ATIS 126.3	RAZORBACK APP CON ★ 120.9 343.75	FORT SMITH TOWER ★ 118.3 (CTAF) 323.175	GND CON 121.9 275.8	CLNC DEL 133.85 278.3	UNICOM 122.95
----------------------	--	---	-------------------------------	---------------------------------	-------------------------



CATEGORY	A	B	C	D
LPV DA		705-1	256 (300-1)	
LNAV/VNAV DA		942-1 3/4	493 (500-1 3/4)	
LNAV MDA	1160-1 711 (700-1)	1160-2 711 (700-2)	1160-2 711 (700-2 1/4)	1160-2 711 (700-2 1/4)
CIRCLING	1160-1 691 (700-1)	1160-2 691 (700-2)	1160-2 691 (700-2 1/4)	1160-2 691 (700-2 1/4)



SC-1, 31 DEC 2020 to 28 JAN 2021

SC-1, 31 DEC 2020 to 28 JAN 2021