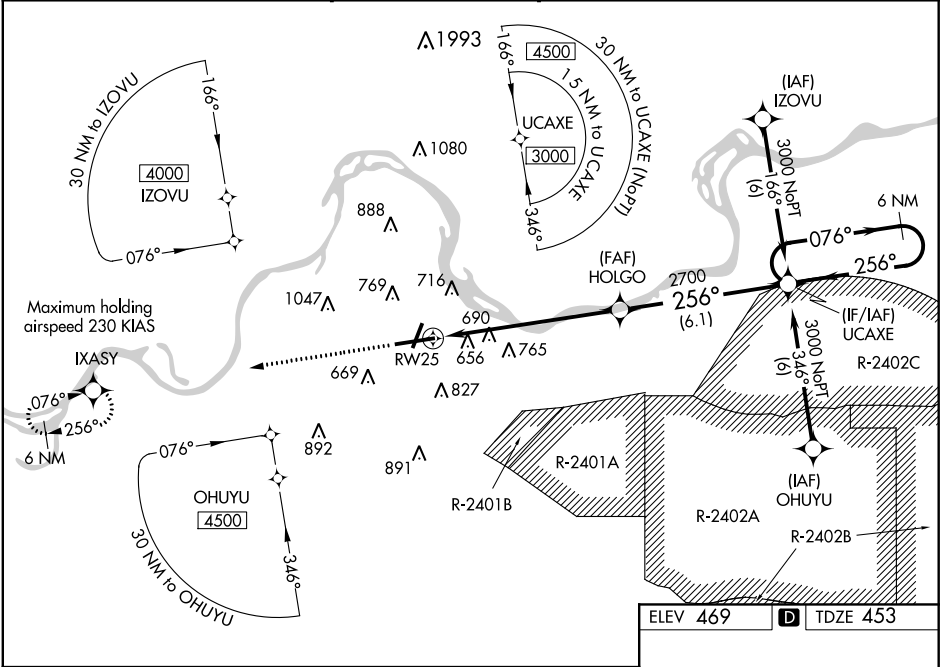


WAAS CH 87117 W25A	APP CRS 256°	Rwy Idg TDZE Apt Elev	8017 453 469
--	------------------------	-----------------------------	---

RNAV (GPS) RWY 25
FORT SMITH RGNL (FSMM)

RNP APCH.				MALSR	
<div><div><div>▼</div><div>▲</div><div>ASR</div></div><div>Inop table does not apply to LPV all Cats. For inop ALS, increase LNAV Cat A/B visibility to RVR 5000, LNAV/VNAV and LNAV Cat E visibility to 1¼. Circling NA for Cat E northwest of Rwy 7 and 19. For uncompensated Baro-VNAV systems, LNAV/VNAV NA below -15°C or above 48°C. Circling Cat E NA when R-2401B active. Rwy 25 helicopter visibility reduction below ¾ SM NA.</div></div>				<div><div><div><div><div>AS</div><div>5</div></div><div><div><div></div><div></div><div></div><div></div><div></div></div></div></div></div><div>MISSED APPROACH: Climb to 3000 direct IXASY and hold.</div></div>	
ATIS 126.3	RAZORBACK APP CON ★ 120.9 343.75	FORT SMITH TOWER ★ 118.3(CTAF) 323.175	GND CON 121.9 275.8	CLNC DEL 133.85 278.3	UNICOM 122.95



3000

IXASY

↑

✦

*LNAV only.

UCAXE

6 NM Holding Pattern

HOLGO

2700

RW25

*1.6 NM to RW25

076°

256°

3000

256°

2700

GP 3.00°

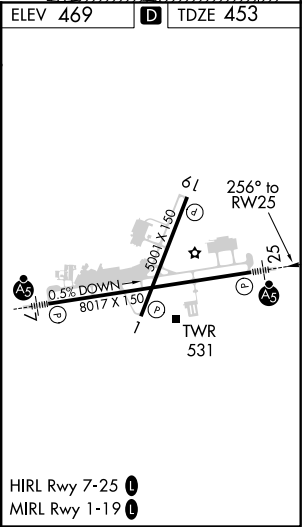
TCH 60°

1.6 NM

5.2 NM

6.1 NM

CATEGORY	A	B	C	D	E
LPV DA	653/40 200 (200-¾)				
LNAV/VNAV DA	979/60 526 (600-1¼)				
LNAV MDA	980/40 527 (600-¾)	980/50 527 (600-1)	980/60 527 (600-1¼)		
CIRCLING	1140-1 671 (700-1)	1140-2 671 (700-2)	1140-2¼ 671 (700-2¼)	1200-2½ 731 (800-2½)	



SC-1, 31 DEC 2020 to 28 JAN 2021

SC-1, 31 DEC 2020 to 28 JAN 2021