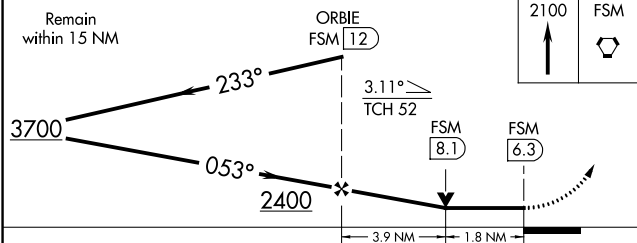
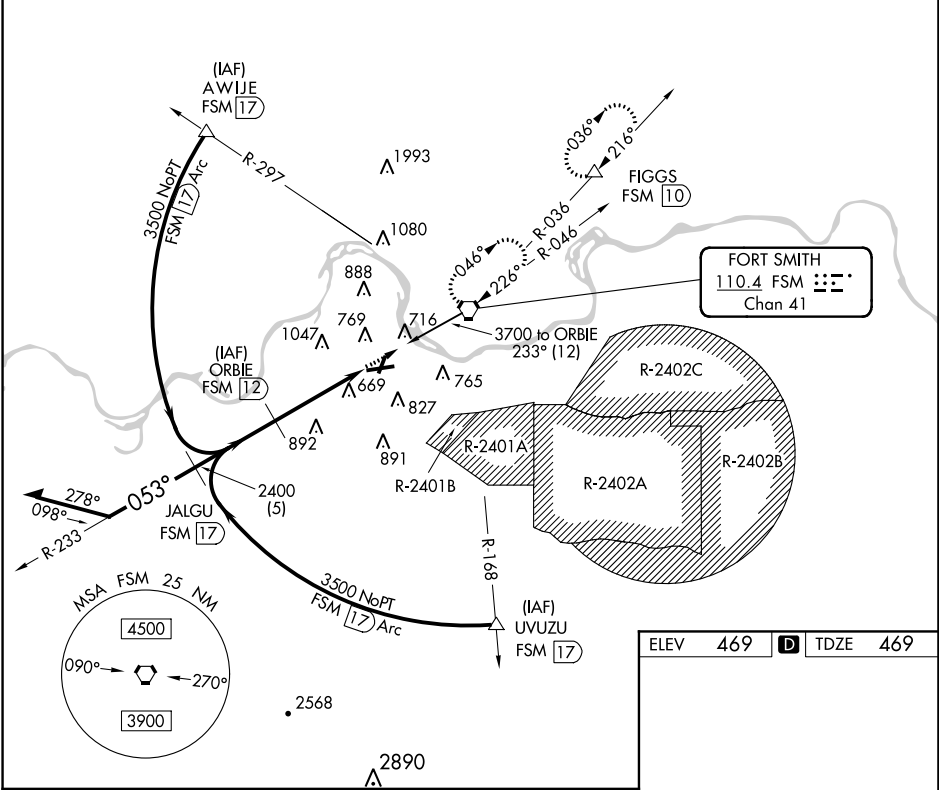


VORTAC FSM	APP CRS	Rwy Idg	8017
<b>110.4</b>	<b>053°</b>	TDZE	<b>469</b>
Chan <b>41</b>		Apt Elev	<b>469</b>

VOR/DME or TACAN RWY 7  
FORT SMITH RGNL (FSM)

 Inoperative table does not apply. Circling NA northwest of Rwy 7 and 19 for Cat E.  Circling Cat E NA when R-2401B active.	 MALSR	MISSED APPROACH: Climb to 2100 direct FSM VORTAC and hold. (TACAN aircraft climbing left turn to 4000 direct FSM VORTAC then via R-036 to FIGGS 10 DME and hold northeast, right turn 216° inbound.)
--	---	--

ATIS <b>126.3</b>	RAZORBACK APP CON ★ <b>120.9 343.75</b>	FORT SMITH TOWER ★ <b>118.3(CTAF) 323.175</b>	GND CON <b>121.9 275.8</b>	CLNC DEL <b>133.85 278.3</b>	UNICOM <b>122.95</b>
----------------------	--	--	-------------------------------	---------------------------------	-------------------------



CATEGORY	A	B	C	D	E
S-7	1080-1 611 (700-1)		1080-1¾ 611 (700-1¾)	1080-2 611 (700-2)	1080-2¼ 611 (700-2¼)
CIRCLING	1140-1 671 (700-1)		1140-2 671 (700-2)	1140-2¼ 671 (700-2¼)	1200-2½ 731 (800-2½)

