

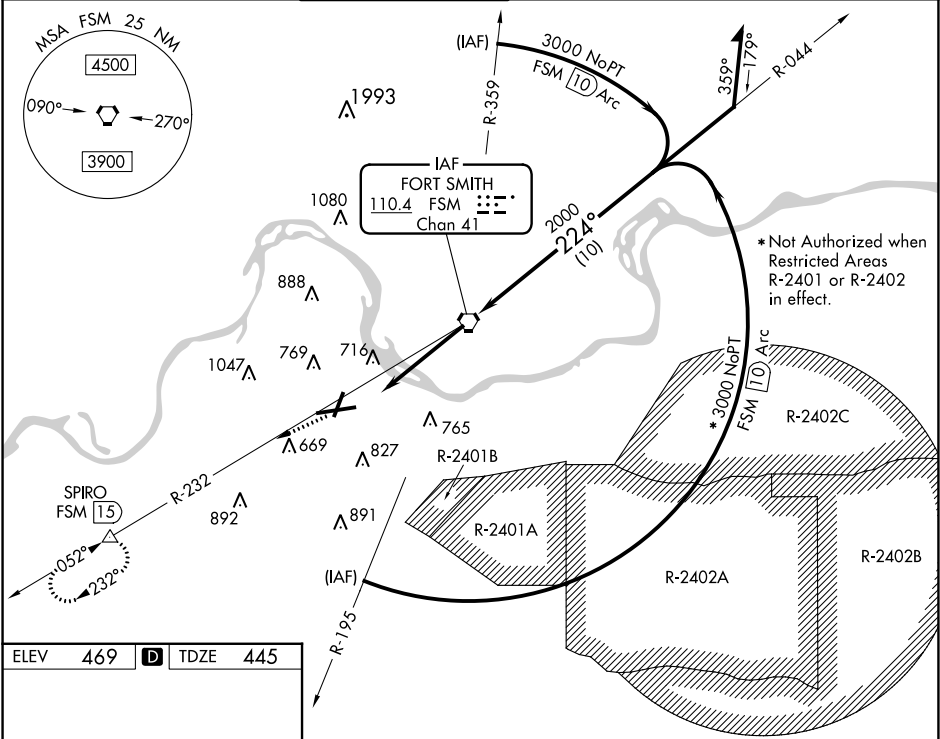


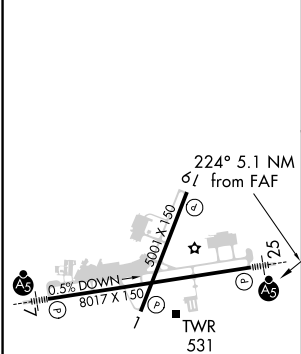
VORTAC FSM	APP CRS	Rwy Idg	8017
<b>110.4</b>	<b>224°</b>	TDZE	<b>445</b>
Chan <b>41</b>		Apt Elev	<b>469</b>

VOR or TACAN RWY 25  
FORT SMITH RGNL (FSM)

 ASR	Inoperative table does not apply. Circling NA northwest of Rwy 7 and 19 for Cat E. Circling Cat E NA when R-2401B active.	 MALSR	MISSED APPROACH: Climb to 4000 via FSM R-232 to SPIRO Int/15 DME and hold.		
ATIS <b>126.3</b>	RAZORBACK APP CON★ <b>120.9 343.75</b>	FORT SMITH TOWER★ <b>118.3 (CTAF) 323.175</b>	GND CON <b>121.9 275.8</b>	CLNC DEL <b>133.85 278.3</b>	UNICOM <b>122.95</b>

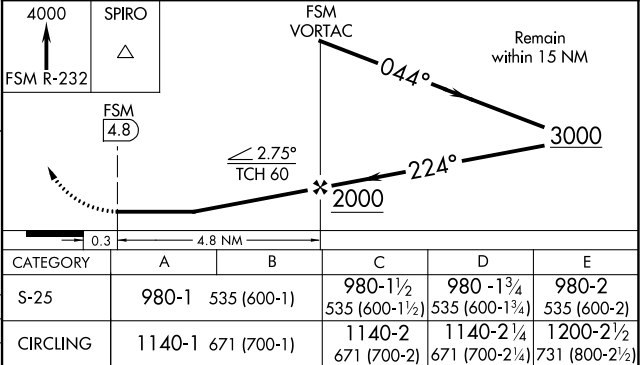


ELEV	469		TDZE	445
------	-----	-----------------------------------------------------------------------------------	------	-----



FAF to MAP 4.8 NM					
Knots	60	90	120	150	180
Min:Sec	4:48	3:12	2:24	1:55	1:36

DME REQUIRED



SC-1, 31 DEC 2020 to 28 JAN 2021

SC-1, 31 DEC 2020 to 28 JAN 2021