

WAAS CH 77521 W22A	APP CRS 223°	Rwy Idg 6601 TDZE 259 Apt Elev 277
--	------------------------	---

RNAV (GPS) RWY 22

SOUTH ARKANSAS RGNL AT GOODWIN FIELD (ELD)

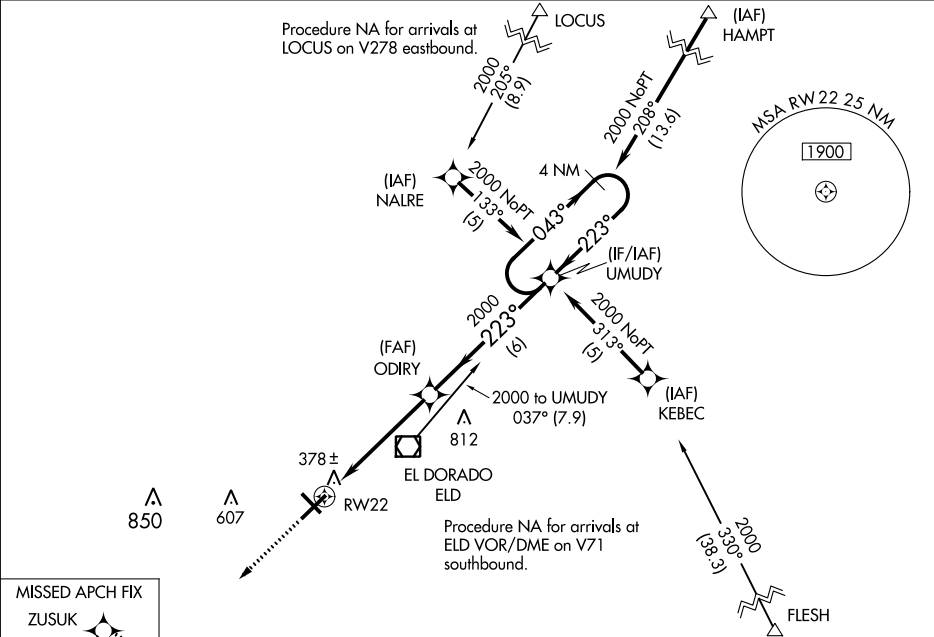
RNP APCH.

For uncompensated Baro-VNAV systems, LNAV/VNAV NA below -1.5°C or above 54°C. For inop ALS, increase LPV all Cats visibility to 1½ SM, increase LNAV/VNAV all Cats visibility to 1¼ SM. Circling Rwy 4, 13, 31, NA at night.

MALSR

MISSED APPROACH:
Climb to 2000 direct ZUSUK and hold.

ASOS 118.325	FORT WORTH CENTER 128.2 269.1	UNICOM 123.0 (CTAF) 0
------------------------	---	---------------------------------



MISSED APCH FIX

ZUSUK

043°

223°

4 NM

2000

ZUSUK

VGSI and RNAV glidepath not coincident (VGSI Angle 3.00/TCH 53).

4 NM Holding Pattern

* LNAV only.

1 NM to RW22

RW22

223°

2000

043°

2000

223°

GP 3.00°

TCH 50

1 NM

4.2 NM

6 NM

CATEGORY	A	B	C	D
LPV DA	602-5⁄8 343 (400-5⁄8)			
LNAV/VNAV DA	650-7⁄8 391 (400-7⁄8)			
LNAV MDA	640-1⁄2 381 (400-1⁄2)		640-5⁄8 381 (400-5⁄8)	
CIRCLING	740-1 463 (500-1)		740-1½ 463 (500-1½)	840-2 563 (600-2)

ELEV 277

TDZE 259

223° to RW22

5100 X 100

0.7°

150

4601 X 100

309

311

MIRL Rwy 13-31 0

HIRL Rwy 4-22 0