

WAAS CH 82105 W18A	APP CRS 176°	Rwy Idg 5150 TDZE 720 Apt Elev 720	RNAV (GPS) RWY 18 OKMULGEE RGNL (OKM)
--	------------------------	---	---

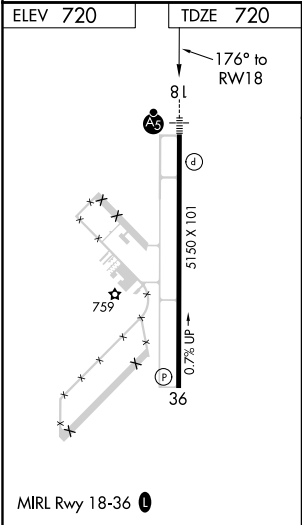
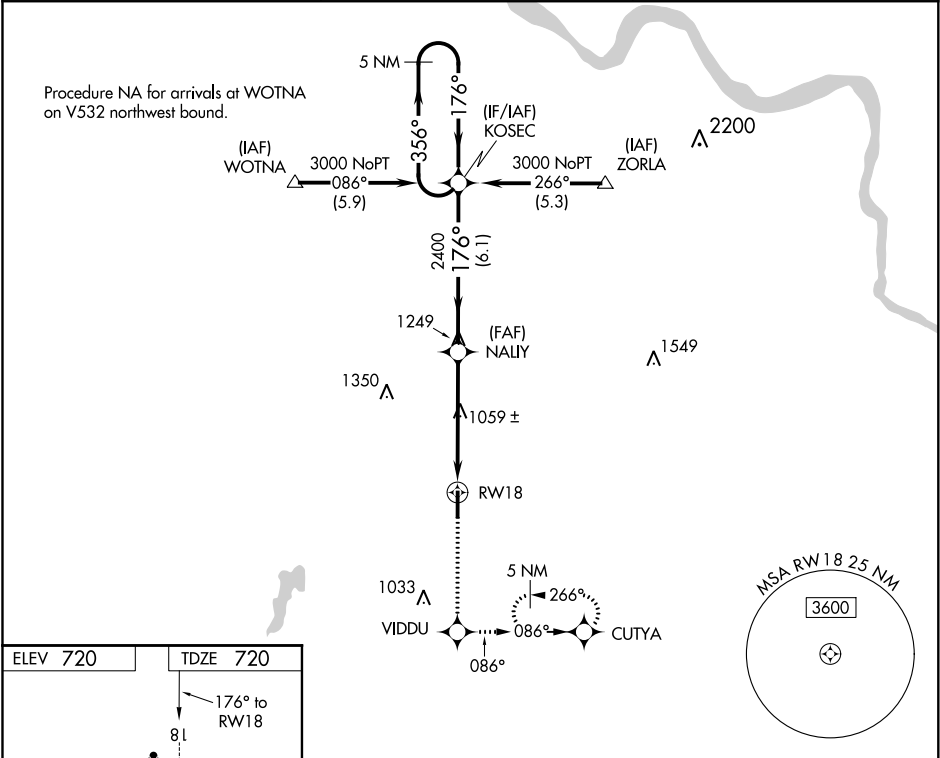
⚠

When local altimeter setting not received, use Tulsa Init altimeter setting: Increase LPV DA to 1050 feet; increase all MDAs 80 feet and visibility Cat C ¼ SM. DME/DME RNP-0.3 NA. VDP NA with Tulsa Init altimeter setting.

MALSR

MISSED APPROACH: Climb to 3000 direct VIDDU and left turn via 086° track to CUTYA and hold, continue climb-in-hold to 3000.

AWOS-3 118.225	TULSA APP CON 119.85 338.3	UNICOM 123.0 (CTAF) 0
--------------------------	--------------------------------------	---------------------------------



3000	VIDDU	086° tr	CUTYA	KOSEC	5 NM Holding Pattern
*LNAV only.	*1.7 NM to RW18	NALY	2400	356° → 3000	GP 3.00° TCH 51
	1.7 NM	3.3 NM	6.1 NM		
CATEGORY	A	B	C	D	
LPV DA	970-½	250 (300-½)		NA	
LNAV MDA	1320-½	600 (600-½)	1320-1 600 (600-1)	NA	
CIRCLING	1320-1 600 (600-1)	1340-1 620 (700-1)	1340-1¾ 620 (700-1¾)	NA	