

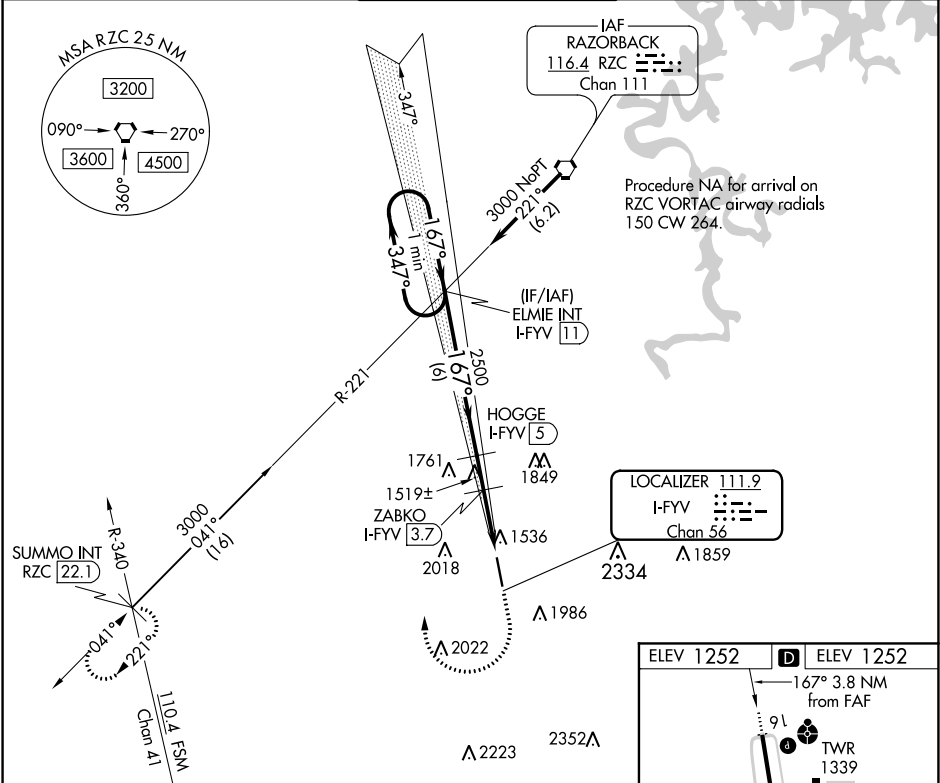
LOC/DME I-FYV	APP CRS	Rwy Idg	6005
111.9	167°	TDZE	1252
Chan 56		Apt Elev	1252

LOC RWY 16

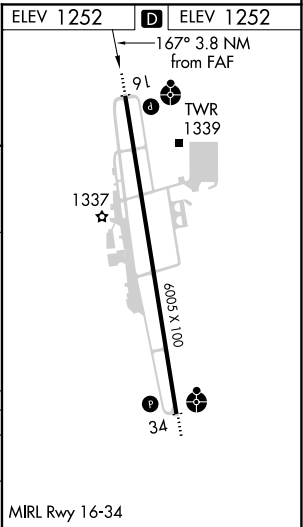
DRAKE FIELD (FYV)

<p><b>T</b></p> <p><b>A</b></p> <p>Circling NA east of Rwy 16-34. Rwy 16 helicopter visibility reduction below 3/4 SM NA. DME required.</p>	<p>ODALS</p> <p></p>	<p>MISSED APPROACH: Climb to 2100 then climbing right turn to 4000 on heading 295° and RZC VORTAC R-221 to SUMMO INT/RZC 22.1 DME and hold.</p>
---	----------------------	---

ATIS	RAZORBACK APP CON★	DRAKE TOWER★	GND CON	UNICOM
119.575	121.0 244.575	128.0 (CTAF) 371.9	121.8	122.95



One Minute Holding Pattern	ELMIE INT I-FYV (11)		2100 ↑	4000 hdg 295°	RZC R-221	SUMMO INT
CATEGORY	A		B		C	D
S-LOC 16	1780-¾ 528 (600-¾)		1780-1⅜ 528 (600-1⅜)			
CIRCLING	2000-1 748 (800-1)		2320-3 1068 (1100-3)			



SC-1, 31 DEC 2020 to 28 JAN 2021

SC-1, 31 DEC 2020 to 28 JAN 2021