
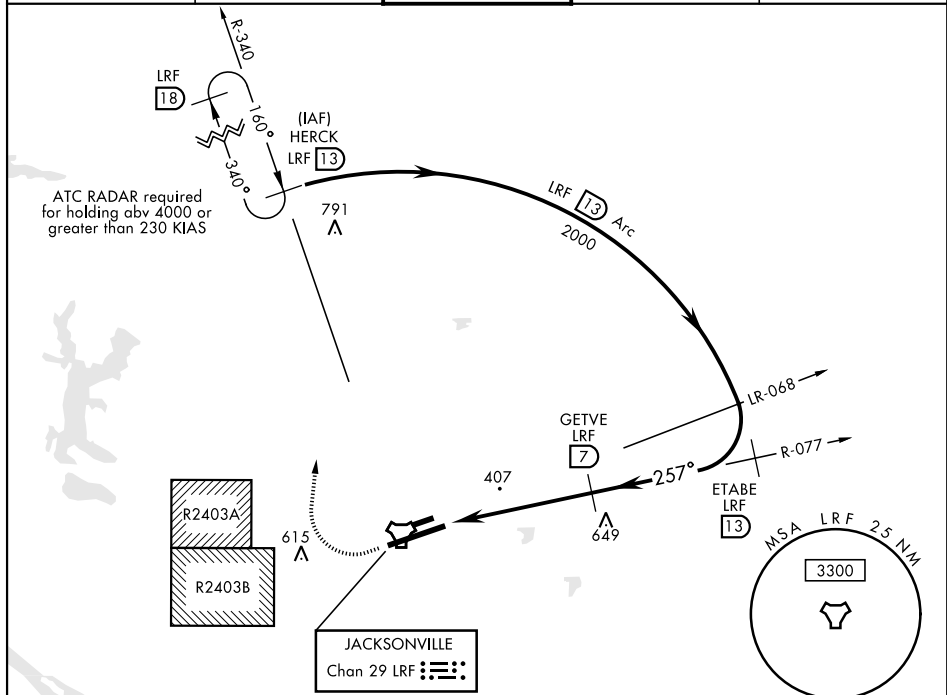


TACAN RWY 25

TACAN LRF Chan 29	APCH CRS 257°	Rwy Ldg 12,000 TDZE 300 Arpt Elev 312	AL-738 [USAF]	LITTLE ROCK AFB (KLRF)
RADAR required when R-2403A / R2403B active.			SSALR 	MISSED APPROACH: Climb to 1300 then turn right climbing to 3000, intercept LRF TACAN R-340 to 13 DME (HERCK) and hold.
<p>▼ * When ALS inop, increase CAT RVR to 55 and vis to 1 mile; CAT CDE vis to 1 1/2 miles.</p> <p>** Circling not authorized south of airfield.</p>				

ATIS ★	LITTLE ROCK APP CON	LITTLE ROCK TOWER	GND CON	CLNC DEL
119.175 251.1	119.5 306.2	120.6 269.075	132.8 275.8	253.5



SC-1, 31 DEC 2020 to 28 JAN 2021

EMERG SAFE ALT 100 NM 4100

