

WAAS
CH **78437**
W35B

APP CRS
355°

Rwy Idg
TDZE **1275**
Apt Elev **1300**

RNAV (GPS) RWY 35L

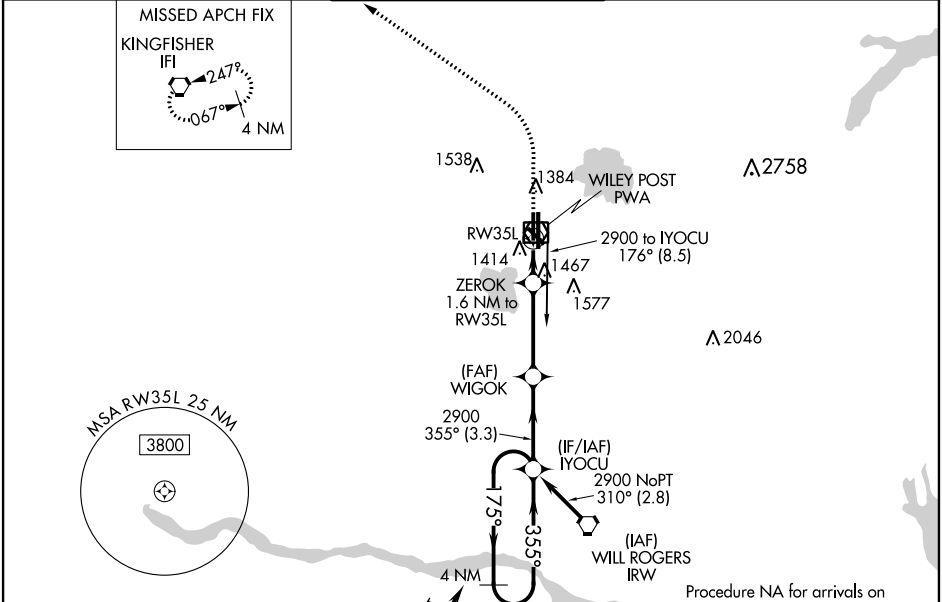
WILEY POST (PWA)

▼
ASR

DME/DME RNP-0.3 NA. VDP NA when using Will Rogers World altimeter setting. When local altimeter setting not received, use Will Rogers World altimeter setting and increase all MDA 40 feet; increase LP Cat C/D visibility 1/8 mile and Circling Cat C 1/4 mile.

MISSED APPROACH:
Climb to 1700 then climbing left turn to 3400 direct IFI VORTAC and hold.

ATIS 128.725	OKE CITY APP CON 124.6 266.8	WILEY POST TOWER ★ 126.9(CTAF) 306.9	GND CON 121.7	UNICOM 122.95
------------------------	--	--	-------------------------	-------------------------



ELEV 1300

D

TDZE 1275

1700	3400	IFI	WIGOK	IYOCU	4 NM Holding Pattern
			ZEROK		
			1.1 NM to RW35L		
			0.5 NM		
			3.4 NM		
			3.3 NM		

CATEGORY	A	B	C	D
LP MDA	1660-1	385 (400-1)	1660-1 1/8	385 (400-1 1/8)
LNAV MDA	1720-1	445 (500-1)	1720-1 3/8	445 (500-1 3/8)
CIRCLING	1780-1	480 (500-1)	1880-1 1/2 580 (600-1 1/2)	1880-2 580 (600-2)