

VOR/DME PWA 113.4 Chan 81	APP CRS 176°	Rwy Idg 6844 TDZE 1291 Apt Elev 1300	VOR RWY 17L WILEY POST (PWA)
---	------------------------	---	---------------------------------

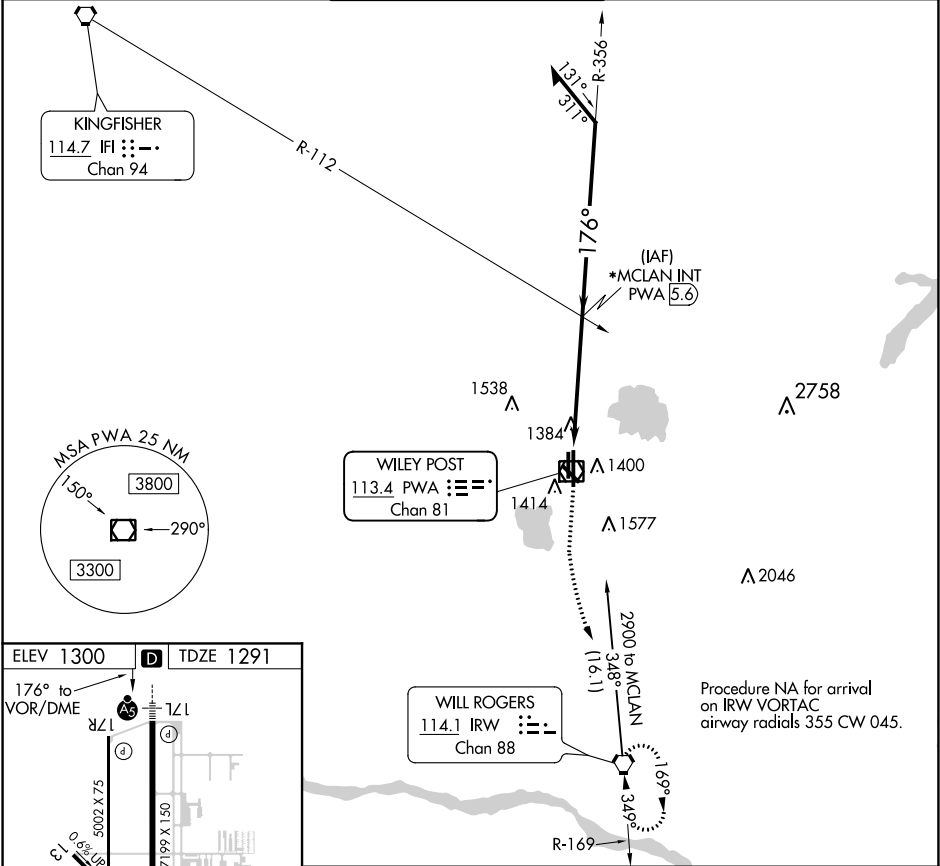
⚠ VDP NA when using Will Rogers World altimeter setting. For inop ALS, increase S-17L Cat C/D visibility to 1 SM. For inop ALS, when using Will Rogers World altimeter setting, increase Cat C/D visibility to 1½ SM. When local altimeter setting not received, use Will Rogers World altimeter setting and increase all MDA 40 feet and increase Cat C/D visibility ½ SM. *RADAR fix in lieu of MCLAN INT will be provided on pilot request.

MALSR

ASR

MISSED APPROACH: Climb to 1700 then climbing left turn to 3000 direct IRW VORTAC and hold.

ATIS 128.725	OKE CITY APP CON 124.6 266.8	WILEY POST TOWER* 126.9(CTAF) 306.9	GND CON 121.7	UNICOM 122.95
------------------------	--	---	-------------------------	-------------------------



ELEV 1300 TDZE 1291

176° to VOR/DME

17L

5002 X 75

1999 X 150

0.6°/1P

4214 X 100

35L

TWR 1349

35R

HIRL Rwy 17L-35R

REIL Rwy 17R and 35L

MIRL Rwy 13-31 and 17R-35L

FAF to MAP 5.6 NM

Knots	60	90	120	150	180
Min:Sec	5:36	3:44	2:48	2:14	1:52

1700 3000 IRW

*MCLAN INT PWA 5.6

Remain within 10 NM

356° 2800

176° 2800

PWA VOR/DME

PWA 1.7

≤ 2.80° TCH 54

0.7 1 NM 3.9 NM

VGSI and descent angles not coincident (VGSI Angle 3.00/TCH 54).

CATEGORY	A	B	C	D
S-17L	1660-½ 369 (400-½)		1660-⅝ 369 (400-⅝)	