

ASR

MISSED APPROACH: Climbing left turn to 3000 via PWA VOR/DME R-220 to MUTTS Int and hold.

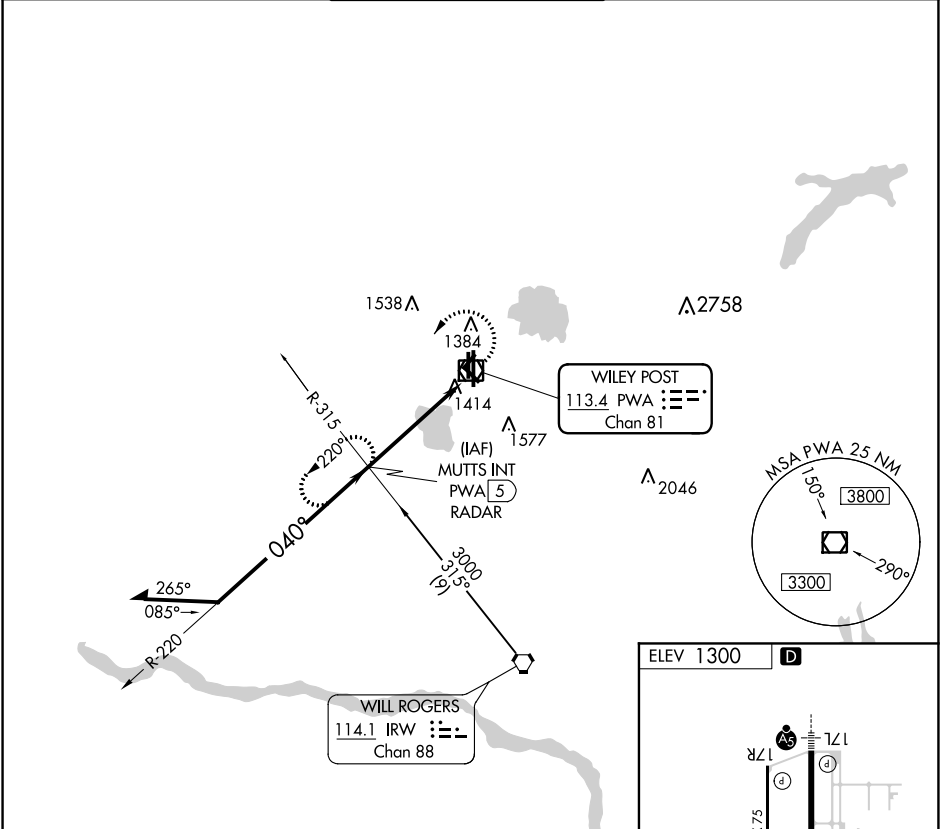
ATIS  
**128.725**

OKE CITY APP CON  
**124.6 266.8**

WILEY POST TOWER ★  
**126.9**(CTAF) **306.9**

GND CON  
**121.7**

UNICOM  
**122.95**



Remain within 10 NM

MUTTS INT PWA (5) RADAR

3000

220°

040°

3000

5 NM

PWA VOR/DME

3000

PWA R-220

MUTTS INT

CATEGORY

A

B

C

D

CIRCLING

1780-1

480 (500-1)

1880-1½  
580 (600-1½)

1880-2  
580 (600-2)

REIL Rwy 17R and 35L

MIRL Rwy 13-31 and 17R-35L

HIRL Rwy 17L-35R