

VORTAC BFV 110.0 Chan 37	APCH CRS 177°	Rwy Idg 13,503 TDZE 1922 Arpt Elev 1922
--	-------------------------	--

JAL-778 [USAF]

CLINTON-SHERMAN (KCSM)

DME required.

* Circling E of Rwy 17R-35L not authorized.

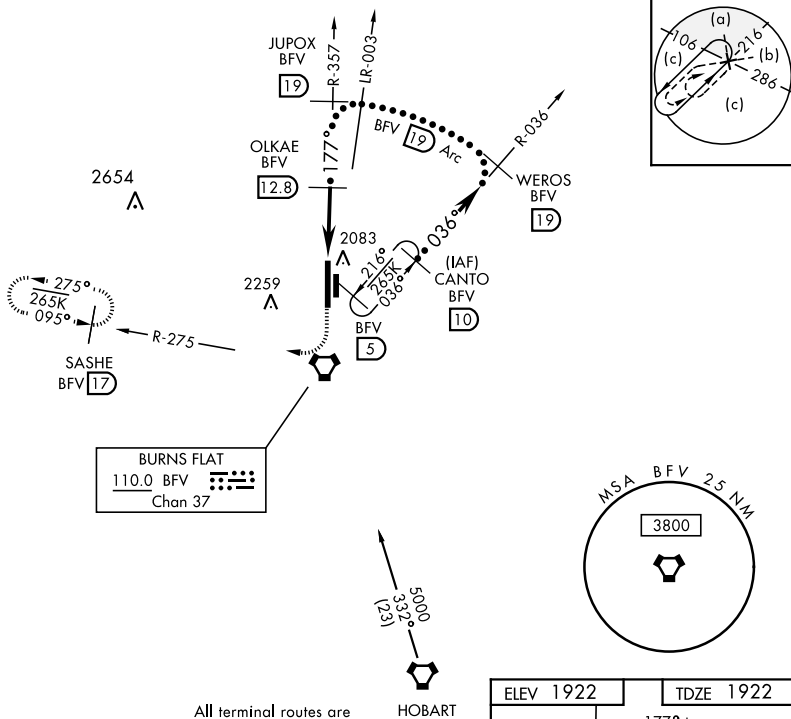
MISSED APPROACH: Climb to 3000 then climbing right turn to 5000 via heading 220° and BFV R-275 to SASHE/17 DME and hold.

ASOS
118.45

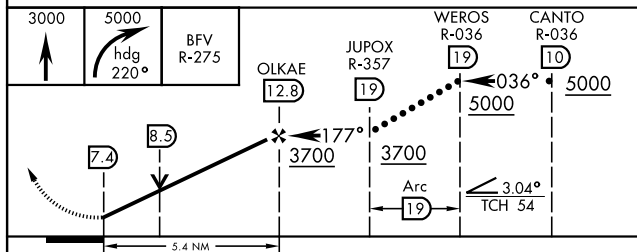
FORT WORTH CENTER
128.4 269.375

CLINTON-SHERMAN TOWER ★
119.6 (CTAF) **L** 256.9

GND CON
121.7 239.0



EMERG SAFE ALT 100 NM 5000



CATEGORY	C	D	E
S-17R	2340-1¼ 418 (500-1¼)		
C CIRCLING *	2380-1½ 458 (500-1½)	2620-2¼ 698 (700-2¼)	2620-2½ 698 (700-2½)

The diagram shows a vertical profile of the runway. At the top, a box labeled 'ELEV 1922' has an arrow pointing down to the runway surface. To the right, a box labeled 'TDZE 1922' has an arrow pointing to the same level, with the text '177° to VORTAC' above it. The runway is represented by a thick black vertical bar. At the top of the bar is a circle with a 'P' (Pavement Edge Lights). Below it is a star (TWR) labeled '1995' and '1985'. Further down is another circle with a 'P'. At the bottom of the bar is a circle with a 'P'. To the left of the bar, the dimensions '13,503 x 200' and '5128 x 75' are listed. To the right, the text 'Rwy 17R-35L marked 200' wide, lighted 300'' is present. The runway is labeled '17R' at the top and '35L' at the bottom. A large 'V' symbol with '2083' is shown to the right of the runway.

BURNS FLAT, OKLAHOMA

35°20'N-99°12'W

CLINTON-SHERMAN (KCSM)

Amdt 3 29MAR18

HI-VOR or TACAN RWY 17R