

WAAS CH <b>86620</b> <b>W36A</b>	APP CRS <b>358°</b>	Rwy Idg TDZE Apt Elev	<b>5998</b> <b>202</b> <b>206</b>
--	------------------------	-----------------------------	---

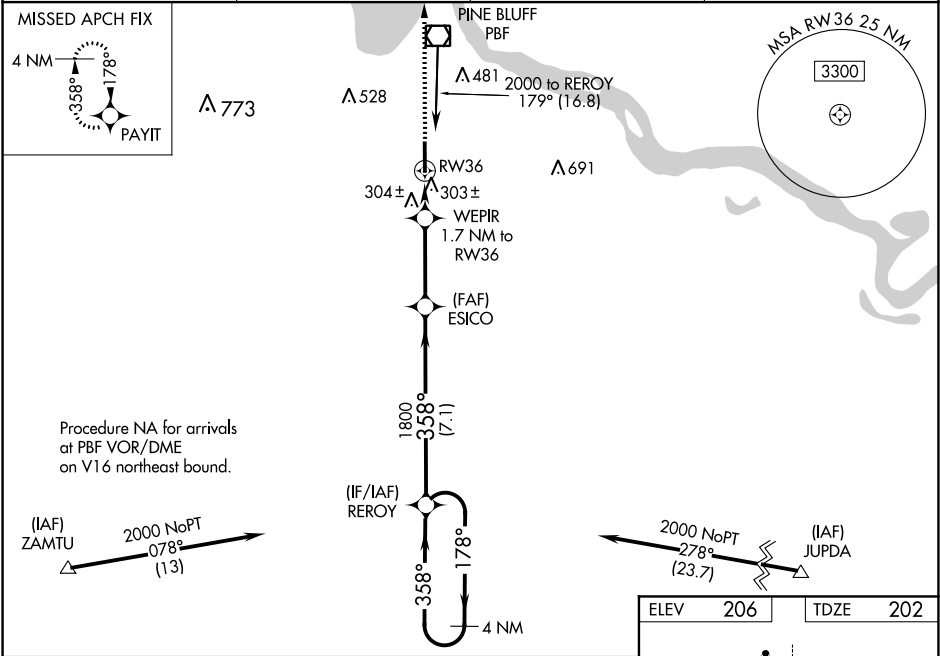
RNAV (GPS) RWY 36

PINE BLUFF RGNL AIRPORT GRIDER FIELD (PBF)

Baro-VNAV NA when using Stuttgart altimeter setting. For uncompensated Baro-VNAV systems, LNAV/VNAV NA below 15°C (5°F) or above 42°C (107°F). DME/DME RNP-0.3 NA. When local altimeter setting not received, use Stuttgart altimeter setting and increase all DA 75 feet and all MDA 80 feet; increase LNAV/VNAV visibility all Cats 1/8 mile and LNAV visibility Cats C and D 1/4 mile.

MISSED APPROACH: Climb to 2000 direct PAYIT and hold.

ASOS <b>120.775</b>	LITTLE ROCK APP CON <b>119.85 353.6</b>	CLNC DEL <b>119.85</b>	UNICOM <b>123.0 (CTAF) 0</b>
------------------------	--	---------------------------	---------------------------------



2000

↑

PAYIT

✦

\*LNAV only.

WEPIR

1.7 NM to RW36

ESICO

1800

REROY

4 NM Holding Pattern

178° →

← 358°

2000

GP 3.00° TCH 52

1.7 NM

3.2 NM

7.1 NM

CATEGORY

A

B

C

D

LPV DA

459-1 250 (300-1)

LNAV/VNAV DA

487-1 285 (300-1)

LNAV MDA

600-1 398 (400-1)

600-1<sup>1</sup>/<sub>8</sub> 398 (400-1<sup>1</sup>/<sub>8</sub>)

CIRCLING

660-1 454 (500-1)

680-1 474 (500-1)

680-1<sup>1</sup>/<sub>2</sub> 474 (500-1<sup>1</sup>/<sub>2</sub>)

760-2 554 (600-2)

