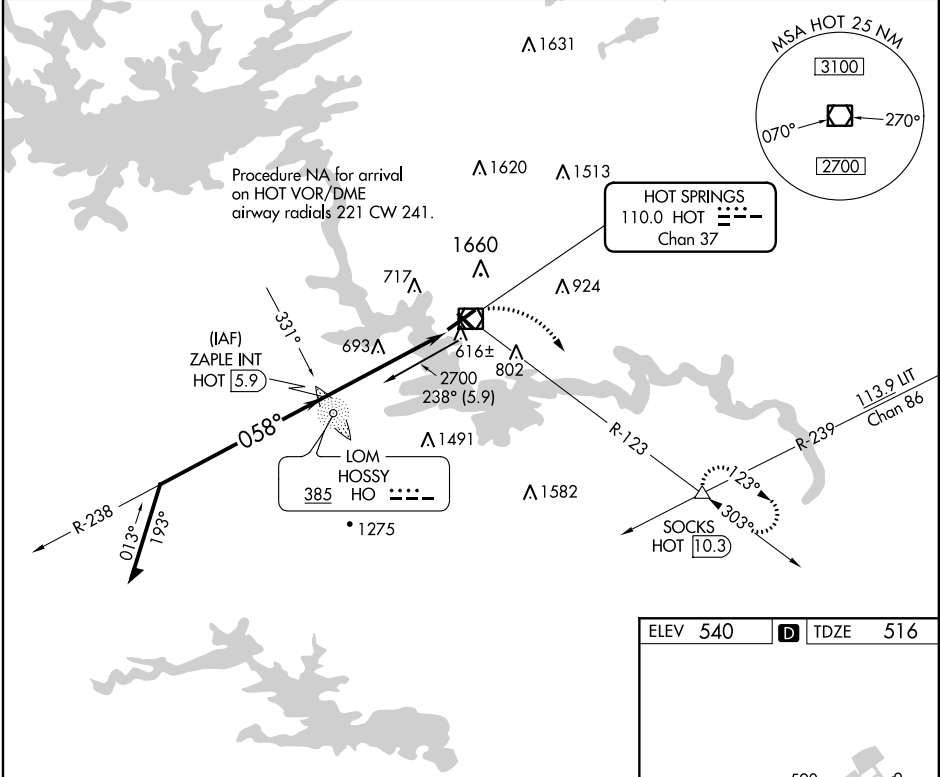


VOR/DME HOT	APP CRS	Rwy Idg
<b>110.0</b>	<b>058°</b>	<b>6595</b>
Chan <b>37</b>		TDZE <b>516</b>
		Apt Elev <b>540</b>

VOR RWY 5  
MEMORIAL FIELD (HOT)

ADF or DME required for procedure entry. ADF or DME required.	MALSR 	MISSED APPROACH: Climbing right turn to 3000 on HOT R-123 to SOCKS INT/HOT 10.3 DME and hold.
 Circling NA northwest of Rwys 5 and 23. Circling Rwy 31 NA at night.		

ASOS <b>119.925</b>	MEMPHIS CENTER <b>128.475 377.15</b>	UNICOM <b>123.0 (CTAF) 0</b>
------------------------	---	---------------------------------



Remain within 10 NM		ZAPLE INT HOT 5.9	3000	SOCKS △
2700		2700	HOT R-123	
2700		2200	HOT 2.1	HOT VOR/DME
2200		3.07° TCH 45		
3.8 NM		1.3	0.8	
CATEGORY	A	B	C	D
S-5	960-1/2	444 (500-1/2)	960-7/8	444 (500-7/8)
CIRCLING	1080-1	540 (600-1)	1380-2 1/2 840 (900-2 1/2)	1620-3 1080 (1100-3)

ELEV 540 TDZE 516

HIRL Rwy 5-23   
MIRL Rwy 13-31   
REIL Rwy 13

SC-1, 31 DEC 2020 to 28 JAN 2021

SC-1, 31 DEC 2020 to 28 JAN 2021