

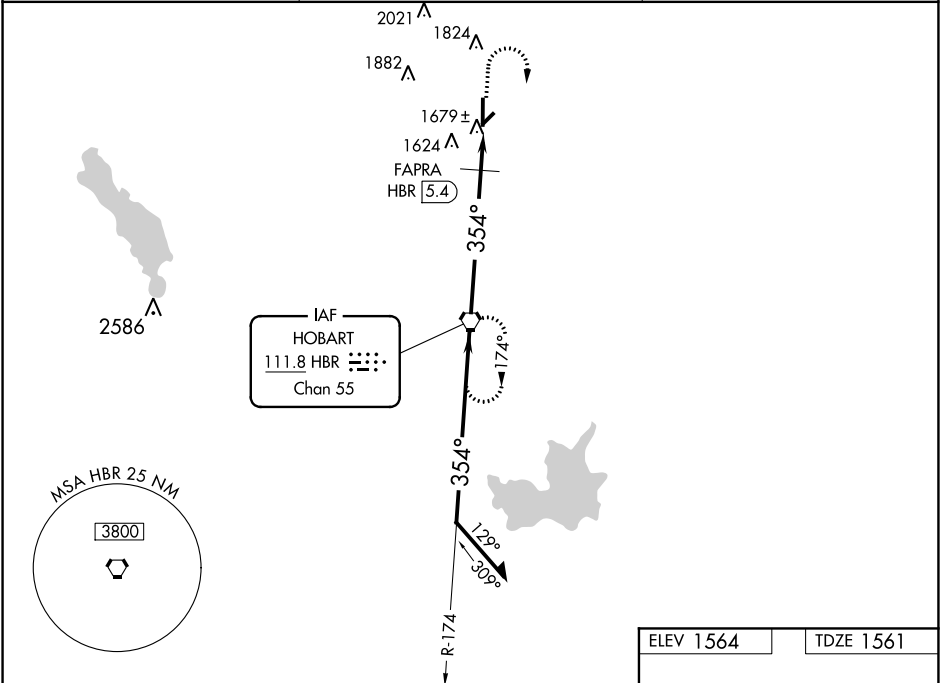
VORTAC HBR	APP CRS	Rwy Idg	5507
111.8	354°	TDZE	1561
Chan 55		Apt Elev	1564

VOR RWY 35
HOBART RGNL (HBR)

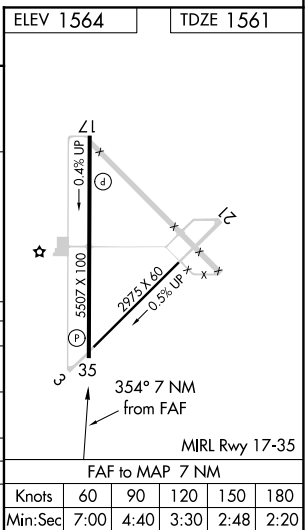
When local altimeter setting not received, use Altus/Quartz Mountain Rgnl altimeter setting and increase all MDAs 80 feet, S-35 Cat C and D visibility ¼ mile, FAPRA fix minimums S-35 Cat D visibility ¼ mile. VDP NA when using Altus/Quartz Mountain Rgnl altimeter setting.

MISSED APPROACH: Climb to 2100, then climbing right turn to 3800 direct HBR VORTAC and hold.

ASOS 133.325	ALTUS APP CON ★ 125.1 353.7	UNICOM 122.8 (CTAF)
-----------------	--------------------------------	------------------------



Remain within 10 NM				
*2140 when using Altus/Quartz Mountain Rgnl altimeter setting.				
CATEGORY	A	B	C	D
S-35	2060-1	499 (500-1)	2060-1¼ 499 (500-1¼)	2060-1½ 499 (500-1½)
CIRCLING	2060-1	496 (500-1)	2060-1½ 496 (500-1½)	2120-2 556 (600-2)
FAPRA FIX MINIMUMS				
S-35	1980-1	419 (500-1)	1980-1¼ 419 (500-1¼)	
CIRCLING	1980-1 416 (500-1)	2020-1 456 (500-1)	2020-1½ 456 (500-1½)	2120-2 556 (600-2)



SC-1, 31 DEC 2020 to 28 JAN 2021

SC-1, 31 DEC 2020 to 28 JAN 2021