

WAAS CH 77640 W35A	APP CRS 351°	Rwy Idg 8599 TDZE 1089 Apt Elev 1110
--	------------------------	---

RNAV (GPS) RWY 35

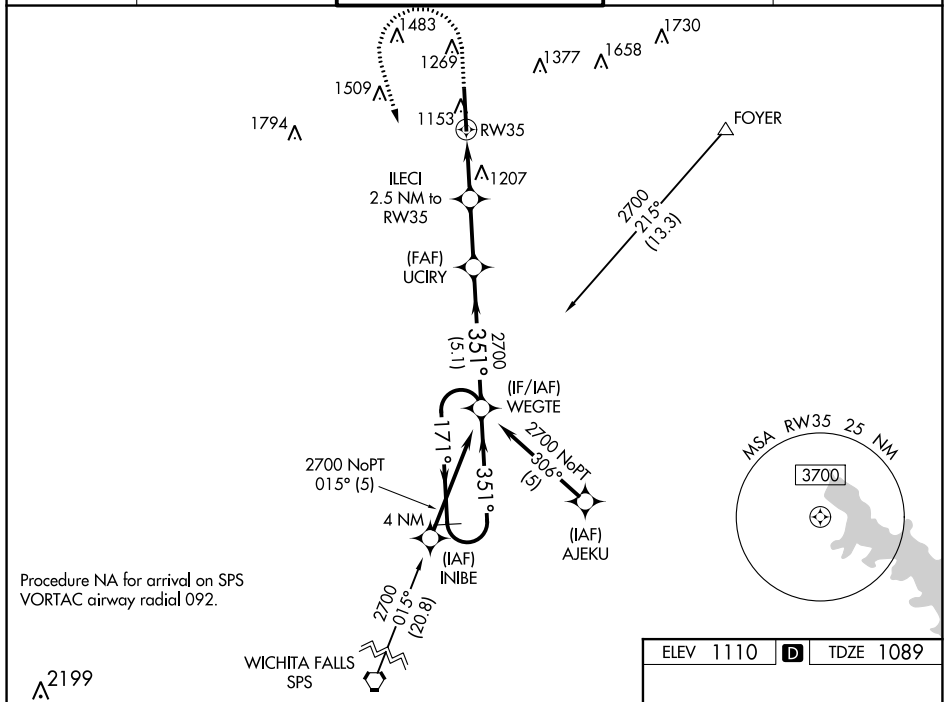
RNP APCH.

T For uncompensated Baro-VNAV systems, LNAV/VNAV NA below -11°C or above 54°C. For inop ALS, increase LNAV/VNAV all Cats visibility to 7/8 SM.

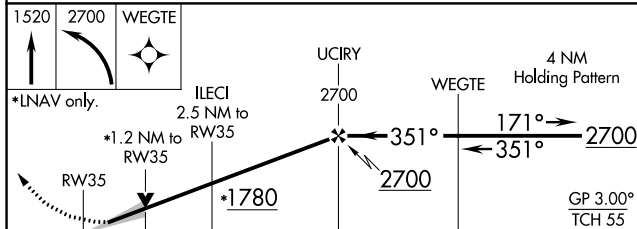
MALSP

MISSED APPROACH: (Do not exceed 200K until WEGTE) Climb to 1520 then climbing left turn to 2700 direct WEGTE and hold.

ATIS 120.75	FORT SILL APP CON 120.55 322.4	LAWTON TOWER ★ 119.9 (CTAF) 0 257.8	GND CON 121.9	UNICOM 122.95
-----------------------	--	---	-------------------------	-------------------------



Procedure NA for arrival on SPS
VORTAC airway radial 092.



	1.2 NM	1.3 NM	2.4 NM	5.1 NM	
CATEGORY	A	B	C	D	
LPV DA	1289-1/2		200 (200-1/2)		
LNAV/VNAV DA	1376-1/2		287 (300-1/2)		
LNAV MDA	1520-1/2	431 (500-1/2)	1520-3/4	431 (500-3/4)	
CIRCLING	1620-1	510 (600-1)	1820-2 710 (800-2)	1820-2 1/4 710 (800-2 1/4)	

