

VOR/DME LAW	APP CRS	Rwy Idg	8599
<b>109.4</b>	<b>349°</b>	TDZE	<b>1089</b>
Chan <b>31</b>		Apt Elev	<b>1110</b>

VOR RWY 35  
LAWTON-FORT SILL RGNL (LAW)

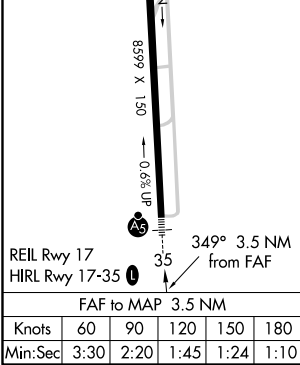
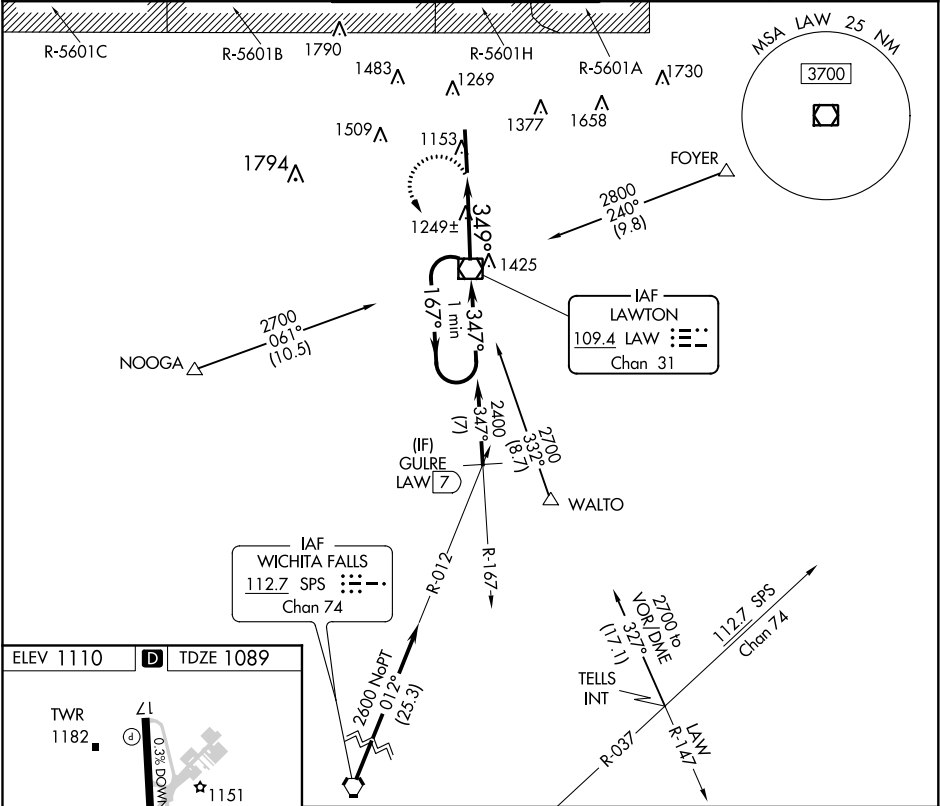
**ASR**

For inop ALS, increase Cat C/D visibility to 1½ SM.

**MALSR**

**MISSED APPROACH:** Climbing left turn to 2800 direct LAW VOR/DME and hold, continue climb-in-hold to 2800.

ATIS <b>120.75</b>	FORT SILL APP CON <b>120.55 322.4</b>	LAWTON TOWER ★ <b>119.9(CTAF) 257.8</b>	GND CON <b>121.9</b>	UNICOM <b>122.95</b>
-----------------------	--	--	-------------------------	-------------------------



2800		LAW	LAW VOR/DME		One Minute Holding Pattern	
2400		LAW 2.5	167°		2700	
2400		LAW 3.5	349°		347°	
1.1 NM		2.4 NM	3.44°		TCH 45	
CATEGORY		A	B	C	D	
S-35		1500-½	411 (500-½)	1500-¾	411 (500-¾)	
CIRCLING		1620-1	510 (600-1)	1820-2	1820-2¼	
				710 (800-2)	710 (800-2¼)	

SC-1, 31 DEC 2020 to 28 JAN 2021

SC-1, 31 DEC 2020 to 28 JAN 2021