
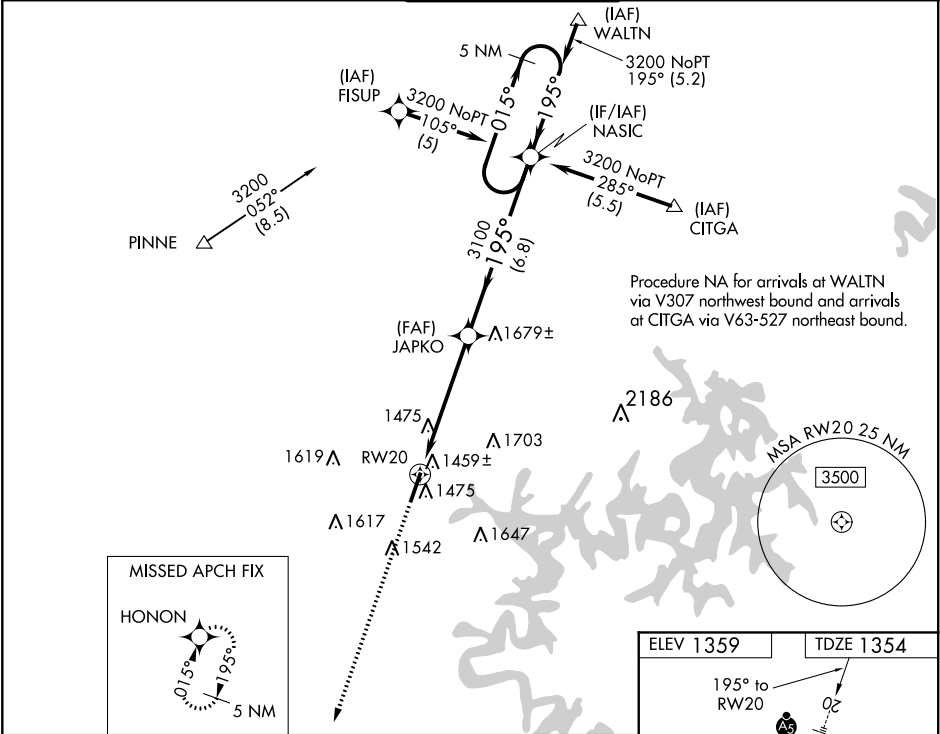



WAAS CH 40003 W20A	APP CRS 195°	Rwy Idg TDZE 1354 Apt Elev 1359	RNAV (GPS) RWY 20 ROGERS EXECUTIVE-CARTER FIELD (ROG)	
▼ For inop MALSR, increase LNAV Cat D to 1½. For uncompensated Baro-VNAV systems, LNAV/VNAV NA below -17°C (2°F) or above 46°C (114°F). DME/DME RNP-0.3 NA. If local altimeter setting not received, use Bentonville Muni altimeter setting and increase all DAs 22 feet and all MDAs 40 feet. Baro-VNAV and VDP NA when using Bentonville Muni altimeter setting.			MALSR 	MISSED APPROACH: Climb to 3100 direct HONON and hold.
AWOS-3PT 134.375	RAZORBACK APP CON* 126.6 305.2	ROGERS TOWER* 119.375 (CTAF) 0	GND CON 118.0	CLNC DEL 121.75



3100	HONON	VGSI and descent angles not coincident (VGSI angle 3.00/TCH 55).		5 NM Holding Pattern
*LNAV only		JAPKO	NASIC	3200
	*1.1 NM to RW20			015°
				195°
				3100
				GP 3.00° TCH 58
	1.1 NM	4.2 NM	6.8 NM	
CATEGORY	A	B	C	D
LPV DA	1604-½		250 (300-½)	
LNAV/VNAV DA	1730-¾		376 (400-¾)	
LNAV MDA	1740-½		386 (400-½)	
			1740-1 386 (400-1)	
CIRCLING	1820-1	461 (500-1)	2020-1¾ 661 (700-1¾)	2020-2 661 (700-2)

