

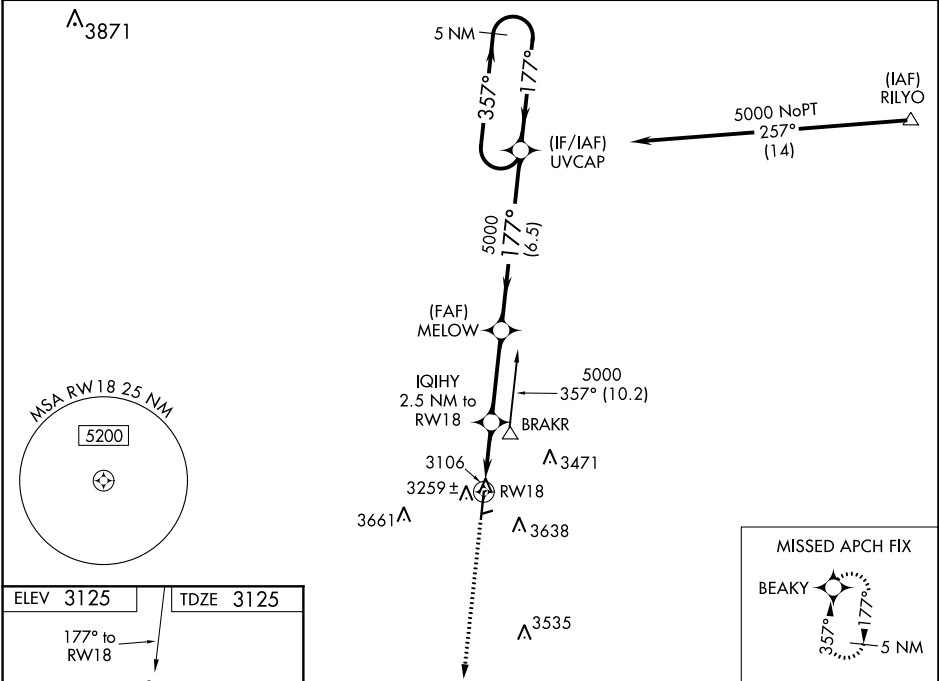
WAAS CH 82625 W18A	APP CRS 177°	Rwy Idg 5904 TDZE 3125 Apt Elev 3125
--	------------------------	---

RNAV (GPS) RWY 18
GUYMON MUNI (GUY)

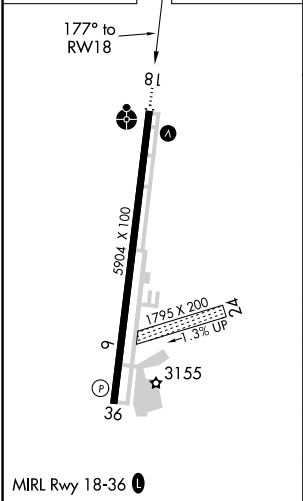
⚠ Baro-VNAV NA when using Liberal altimeter setting. For uncompensated Baro-VNAV systems, LNAV/VNAV NA below -21°C (-5°F) or above 54°C (130°F). When VGSi inop, Straight-in/ Circling Rwy 18 procedure NA at night. Circling NA East of Rwy 18-36. DME/DME RNP-0.3 NA. Visibility reduction by helicopters NA. When local altimeter not received, use Liberal altimeter setting and increase all DA 113 feet and all MDA 120 feet, increase LPV all Cats visibility ¼ mile, increase LNAV/VNAV all Cats and LNAV Cat C visibility ⅓ mile. Circling NA to Rwy 6 and 24.

ODALS 	MISSED APPROACH: Climb to 6000 direct BEAKY and hold.
-----------	---

ASOS 119.925	KANSAS CITY CENTER 134.0 257.865	UNICOM 122.7 (CTAF)
------------------------	--	-------------------------------




ELEV 3125	TDZE 3125
------------------	------------------



6000

↑

BEAKY



VGSi and RNAV glidepath not coincident
(VGSi Angle 3.00/TCH 25).

5 NM
Holding Pattern

*LNAV only

MELOW

5000

UVCAP

5000

IQIHY

2.5 NM to RW18

177°

357°

3940

5000

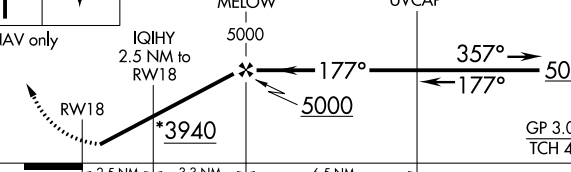
GP 3.00°
TCH 45

2.5 NM

3.3 NM

6.5 NM

RW18



CATEGORY	A		B		C	D
LPV DA	3375-1		250 (300-1)			NA
LNAV/VNAV DA	3451-1		326 (400-1)			NA
LNAV MDA	3520-1		395 (400-1)			NA
CIRCLING	3580-1	455 (500-1)	3580-1½ 455 (500-1½)			NA

SC-1, 31 DEC 2020 to 28 JAN 2021

SC-1, 31 DEC 2020 to 28 JAN 2021