

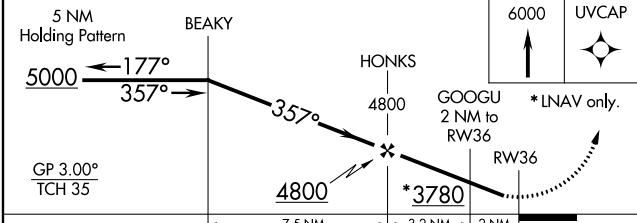
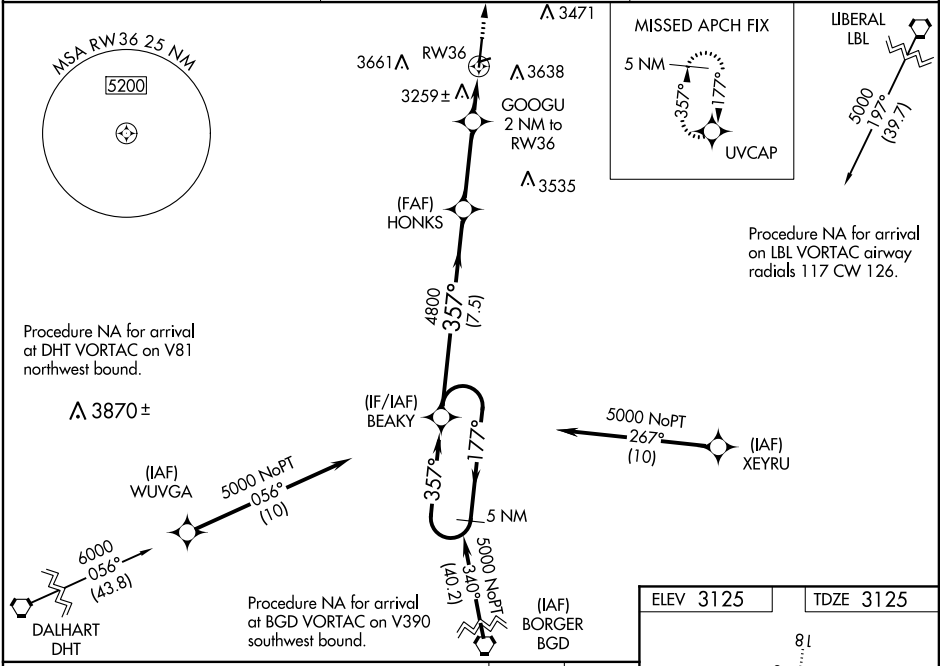
WAAS CH <b>50525</b> <b>W36A</b>	APP CRS <b>357°</b>	Rwy Idg TDZE <b>3125</b> Apt Elev <b>3125</b>	<b>5904</b> <b>3125</b> <b>3125</b>
--	------------------------	---	---

**RNAV (GPS) RWY 36**  
GUYMON MUNI (GUY)

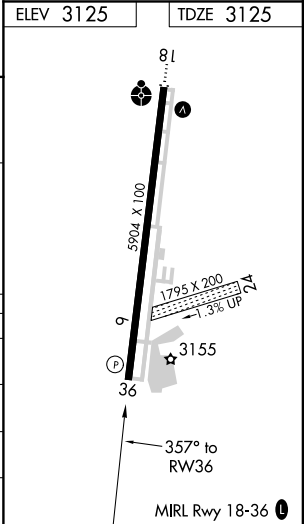
**⚠** Baro-VNAV NA when using Liberal altimeter setting. For uncompensated Baro-VNAV systems, LNAV/VNAV NA below -21°C (-5°F) or above 54°C (130°F). When VGSI inop, Straight-in/Circling Rwy 36 procedure NA at night. Circling NA East of Rwy 18-36. DME/DME RNP-0.3 NA. Visibility reduction by helicopters NA. When local altimeter not received, use Liberal altimeter setting and increase all DA 113 feet and all MDA 120 feet, increase LPV all Cts visibility ¼ mile, increase LNAV/VNAV all Cts and LNAV Cat C visibility ⅓ mile. Circling NA to Rwy 6 and 24.

**MISSED APPROACH:**  
Climb to 6000 direct UVCAP and hold.

ASOS <b>119.925</b>	KANSAS CITY CENTER <b>134.0 257.865</b>	UNICOM <b>122.7 (CTAF) 0</b>
------------------------	--	---------------------------------



CATEGORY	A	B	C	D
LPV DA	3375-1	250 (300-1)		NA
LNAV/VNAV DA	3584-1½	459 (500-1½)		NA
LNAV MDA	3520-1	395 (400-1)	3520-1½ 395 (400-1½)	NA
CIRCLING	3580-1	455 (500-1)	3580-1½ 455 (500-1½)	NA



SC-1, 31 DEC 2020 to 28 JAN 2021

SC-1, 31 DEC 2020 to 28 JAN 2021