

LOC/DME I-SWO 109.15 Chan 28 (Y)	APP CRS 174°	Rwy Idg TDZE 1000 Apt Elev 1000
--	------------------------	---

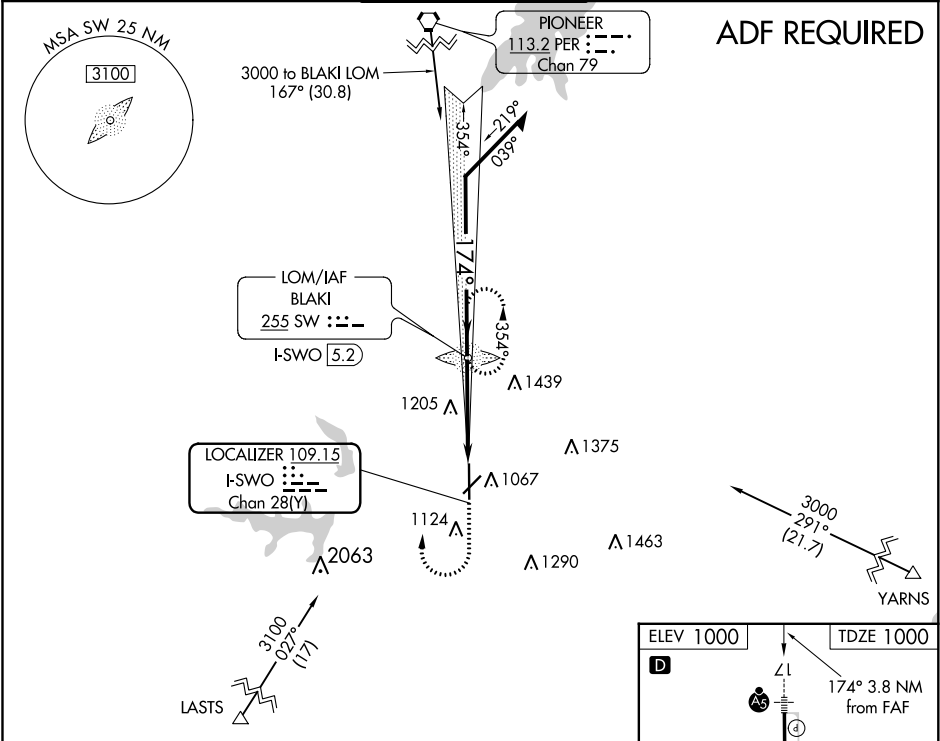
ILS or LOC RWY 17
STILLWATER RGNL (SWO)

⚠ When local altimeter setting not received, use Ponca City Rgnl altimeter setting and increase all DA/MDA 80 feet; increase S-LOC 17 Cats C/D visibility ¼ mile; increase Circling Cat D visibility ½ mile. For inoperative MALSR when using Ponca City Rgnl altimeter setting, increase S-ILS 17 all Cats visibility to 1 mile. VDP NA with Ponca City Rgnl altimeter setting.

MALSR

MISSED APPROACH:
Climb to 1500 then climbing right turn to 3200 direct BLAKI LOM and hold.

ASOS 135.725	KANSAS CITY CENTER 127.8 319.1	STILLWATER TOWER ★ 125.35 (CTAF) 0	GND CON 121.6	UNICOM 122.95
------------------------	--	--	-------------------------	-------------------------



VGSI and ILS glidepath not coincident (VGSI Angle 3.00/TCH 48).

Remain within 10 NM

BLAKI LOM I-SWO (5.2)

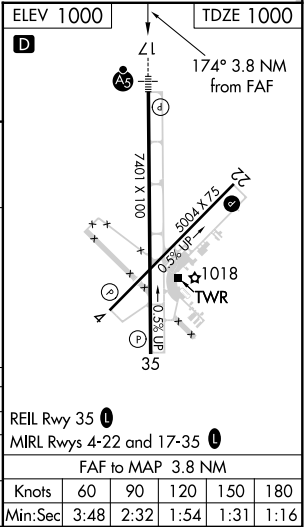
GS 3.00° TCH 45

2600 354° 174° 2277 2300

*I-SWO (2.7) I-SWO (1.4)

2.5 NM 1.3

CATEGORY	A	B	C	D
S-ILS 17	1200-½ 200 (200-½)			
S-LOC 17	1460-½ 460 (500-½)	1460-¾ 460 (500-¾)	1460-1 460 (500-1)	
CIRCLING	1460-1 460 (500-1)	1520-1½ 520 (600-1½)	1740-2¼ 740 (800-2¼)	



SC-1, 31 DEC 2020 to 28 JAN 2021

SC-1, 31 DEC 2020 to 28 JAN 2021