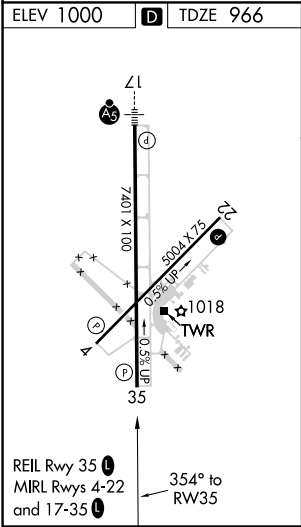
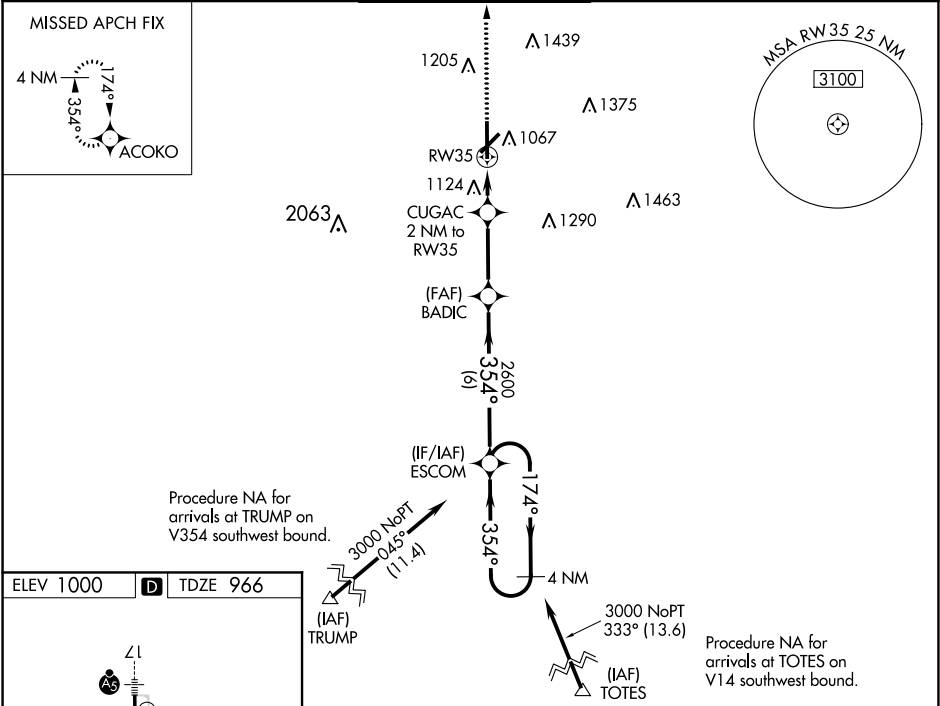


WAAS CH 42633 W35A	APP CRS 354°	Rwy Idg TDZE Apt Elev	7401 966 1000
--	------------------------	-----------------------------	--

RNAV (GPS) RWY 35
STILLWATER RGNL (SWO)

RNP APCH.		MISSED APPROACH: Climb to 3000 direct ACOKO and hold.		
Baro-VNAV NA when using Ponca City Rgnl altimeter setting. For uncompensated Baro-VNAV systems, LNAV/VNAV NA below -16°C (4°F) or above 54°C (130°F). VDP NA with Ponca City Rgnl altimeter setting. When local altimeter setting not received, use Ponca City Rgnl altimeter setting and increase all DA/MDA 80 feet and increase LPV all Cats visibility 1/8 mile, increase LNAV/VNAV all Cats visibility 1/4 mile, LNAV Cats C/D visibility 1/4 mile, Circling Cat D visibility 1/2 mile.				
ASOS 135.725	KANSAS CITY CENTER 127.8 319.1	STILLWATER TOWER ★ 125.35 (CTAF) 0	GND CON 121.6	UNICOM 122.95



ELEV 1000 D TDZE 966		Procedure NA for arrivals at TRUMP on V354 southwest bound.		Procedure NA for arrivals at TOTES on V14 southwest bound.	
3000 ACOKO		VGS1 and RNAV glidepath not coincident (VGS1 Angle 3.00/TCH 26).		4 NM Holding Pattern	
*LNAV only.		CUGAC 2 NM to RW35		BADIC	
RW35		*1.2 NM to RW35		ESCOM	
1.2 NM		0.8 NM		3 NM	
CATEGORY		A		B	
LPV DA		1166-3/4		200 (200-3/4)	
LNAV/VNAV DA		1256-1		290 (300-1)	
LNAV MDA		1380-1		1380-1 1/8	
CIRCLING		1420-1		1460-1	
		420 (500-1)		520 (600-1 1/2)	
		1460-1		1520-1 1/2	
		460 (500-1)		1740-2 1/4	
				740 (800-2 1/4)	

SC-1, 31 DEC 2020 to 28 JAN 2021

SC-1, 31 DEC 2020 to 28 JAN 2021