

STILLWATER, OKLAHOMA

AL-5151 (FAA)

20142

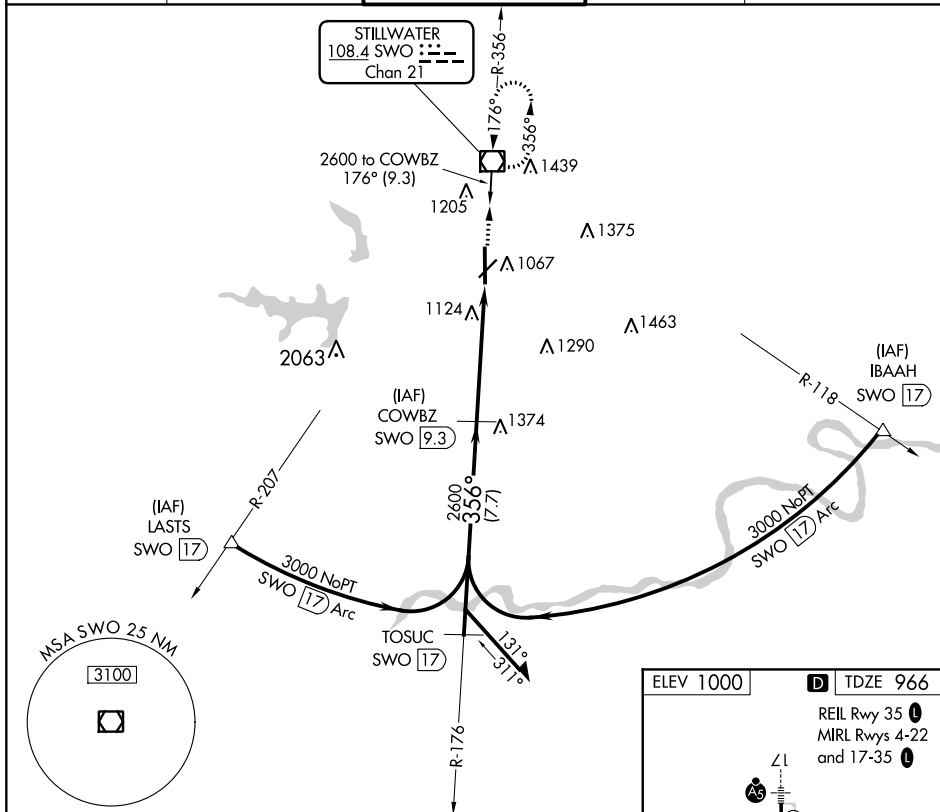
VOR/DME SWO 108.4 Chan 21	APP CRS 356°	Rwy Idg 7401 TDZE 966 Apt Elev 1000
---	------------------------	--

VOR/DME RWY 35
STILLWATER RGNL (SWO)

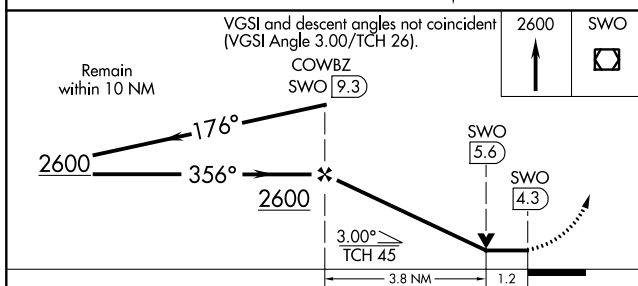
T When local altimeter setting not received, use Ponca City Rgnl altimeter setting
A and increase all MDA 80 feet; S-35 Cats C/D visibility $\frac{1}{4}$ mile; Circling Cat D
visibility $\frac{1}{2}$ mile. VDP NA with Ponca City altimeter setting.


MISSED APPROACH: Climb to 2600 direct SWO VOR/DME and hold.

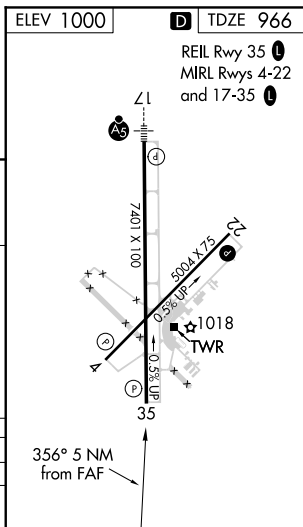
ASOS 135.725	KANSAS CITY CENTER 127.8 319.1	STILLWATER TOWER ★ 125.35 (CTAF) 0	GND CON 121.6	UNICOM 122.95
-----------------	-----------------------------------	---------------------------------------	------------------	------------------



SC-1, 31 DEC 2020 to 28 JAN 2021



CATEGORY	A	B	C	D
S-35	1380-1	414 (400-1)	1380-1¼	414 (400-1¼)
 CIRCLING	1420-1 420 (500-1)	1460-1 460 (500-1)	1520-1½ 520 (600-1½)	1740-2¼ 740 (800-2¼)



STILLWATER, OKLAHOMA
Amdt 1B 21AUG14

36°10'N-97°05'W

STILLWATER RGNL (SWO)
VOR/DME RWY 35