

LOC I-ASG <u>110.9</u>	APP CRS 183°	Rwy Idg 4939 TDZE 1351 Apt Elev 1353
----------------------------------	------------------------	---

ILS or LOC RWY 18
SPRINGDALE MUNI (ASG)

T

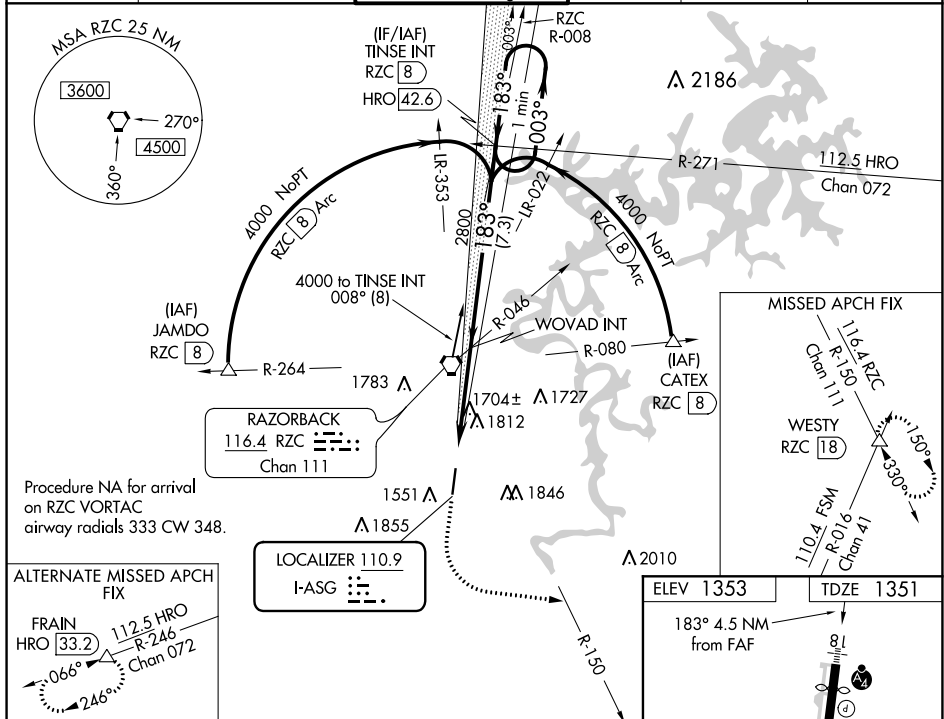
Circling NA east of Rwy 18-36. Rwy 18 helicopter visibility reduction below $\frac{3}{4}$ SM NA. Autopilot coupled approach NA below 1900. For inop ALS, increase S-ILS 18 visibility to $\frac{7}{8}$ SM.

MALSF



MISSED APPROACH: Climb to 2300 then climbing left turn to 4000 on heading 120° and RZC VORTAC R-150 to WESTY INT/RZC 18 DME and hold.

AWOS-3 124.675	RAZORBACK APP CON* 126.6 305.2	SPRINGDALE TOWER* 118.2 (CTAF) L	GND CON 121.6	REIL 18, 36 122.8 0	UNICOM 122.95
-------------------	-----------------------------------	-------------------------------------	------------------	------------------------	------------------

[illegible]

CATEGORY	A	B	C	D
S-ILS 18	1605- ³ / ₄ 254 (300- ³ / ₄)			
S-LOC 18	1960- ³ / ₄ 609 (700- ³ / ₄)		1960-1 ¹ / ₂ 609 (700-1 ¹ / ₂)	
C CIRCLING	1960-1 607 (700-1)	2000-1 647 (700-1)	2020-1 ³ / ₄ 667 (700-1 ³ / ₄)	2220-2 ³ / ₄ 867 (900-2 ³ / ₄)

FAF to MAP 4.5 NM					
Knots	60	90	120	150	180
Min:Sec	4:30	3:00	2:15	1:48	1:30