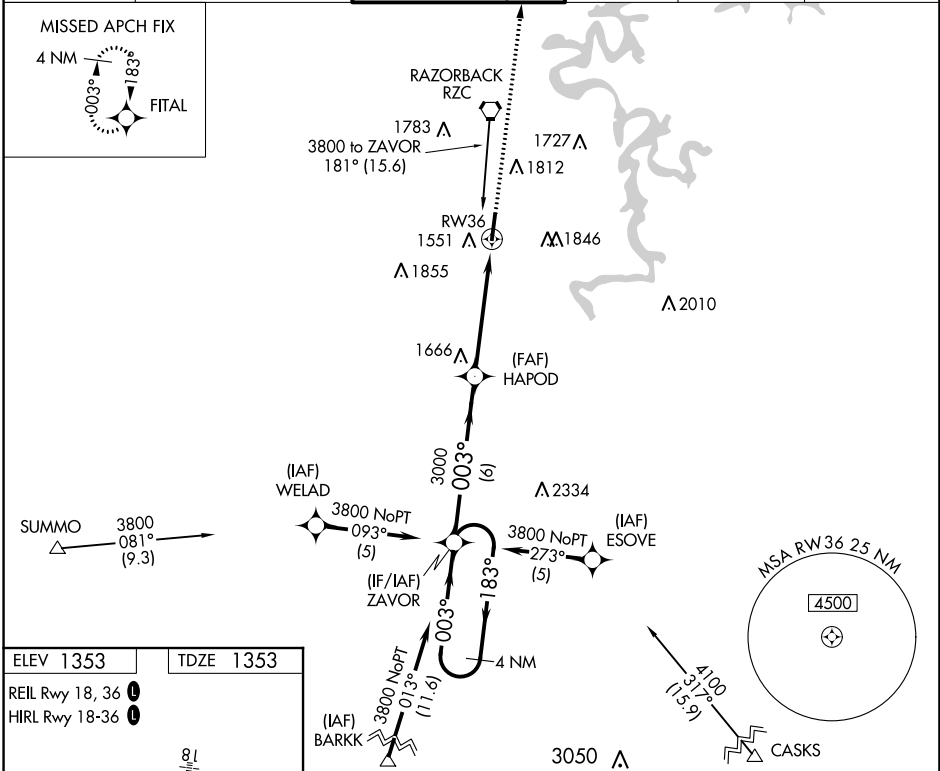


WAAS Ch 77512 W36A	APP CRS 003°	Rwy Idg 5302 TDZE 1353 Apt Elev 1353
--	------------------------	---

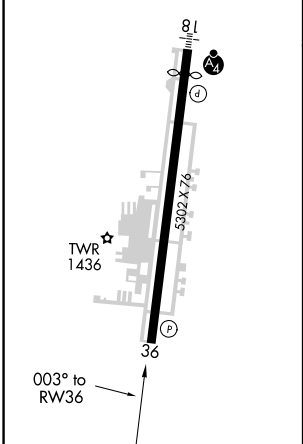
RNAV (GPS) RWY 36
SPRINGDALE MUNI (ASG)


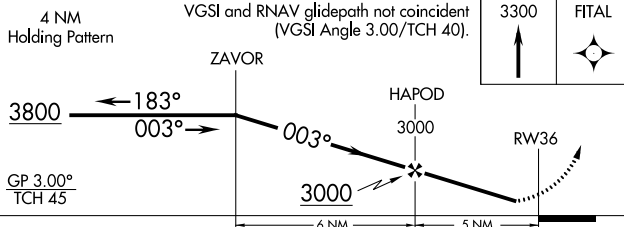

<p>⚠ DME/DME RNP-0.3 NA. Circling NA east of Rwy 18-36. When local altimeter setting not received, use Fayetteville/Drake Field altimeter setting and increase all DA 39 feet and all MDA 40 feet; increase visibility LNAV Cat C/D 1/8 mile and Circling Cat C/D 1/4 mile. Helicopter visibility reduction below 3/4 SM NA.</p>	<p>MISSED APPROACH: Climb to 3300 direct FITAL and hold.</p>
---	---

AWOS-3 124.675	RAZORBACK APP CON * 126.6 305.2	SPRINGDALE TOWER * 118.2 (CTAF) 0	GND CON 121.6	REIL 18, 36 122.8 0	UNICOM 122.95
--------------------------	---	---	-------------------------	-------------------------------	-------------------------



ELEV 1353	TDZE 1353
REIL Rwy 18, 36 0	
HIRL Rwy 18-36 0	



4 NM Holding Pattern		VGSI and RNAV glidepath not coincident (VGSI Angle 3.00/TCH 40).		3300 ↑	FITAL 
					
CATEGORY	A	B	C	D	
LPV DA	1603-1 250 (300-1)				
LNAV MDA	1960-1 607 (700-1)		1960-1 ³ / ₄ 607 (700-1 ³ / ₄)		
 CIRCLING	1960-1 607 (700-1)	2000-1 647 (700-1)	2020-1 ³ / ₄ 667 (700-1 ³ / ₄)	2220-2 ³ / ₄ 867 (900-2 ³ / ₄)	