

VOR/DME JBR	APP CRS	Rwy Idg	6200
108.6	227°	TDZE	262
Chan 23		Apt Elev	262

VOR RWY 23

JONESBORO MUNI (JBR)

⚠

⚠

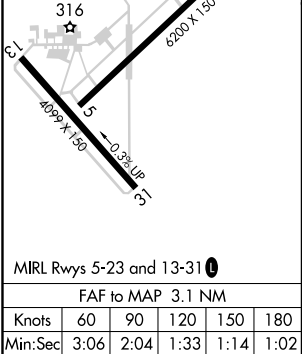
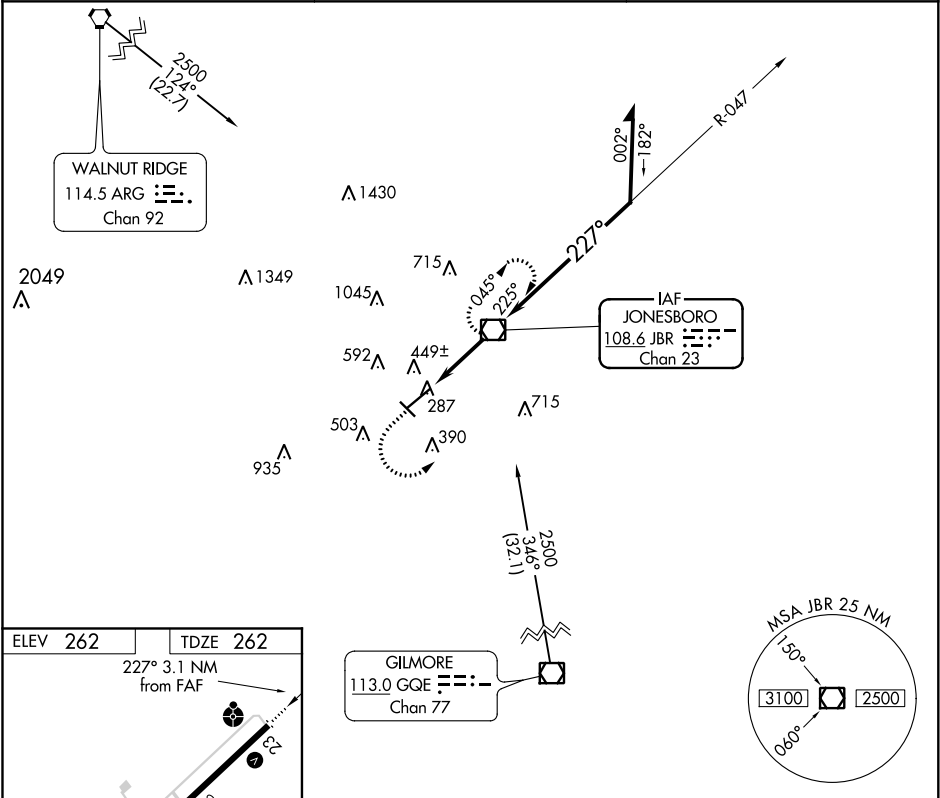
Circling Rwy 31 NA at night. Circling NA northwest of Rwy 5-23. Rwy 23 helicopter visibility reduction below ¾ SM NA. When local altimeter setting not received, use Walnut Ridge altimeter setting and increase all MDAs 60 feet and visibility S-23 Cat C/D ½ SM.

ODALS

⚠

MISSED APPROACH: Climb to 2000 then climbing left turn to 2300 direct JBR VOR/DME and hold.

ASOS 118.525	MEMPHIS CENTER 120.075 289.4	UNICOM 123.0 (CTAF) 0
-----------------	---------------------------------	--------------------------



	2000	2300	JBR	JBR VOR/DME 2500	Remain within 10 NM
	↑	↪	☐		
			JBR 1.9	047°	2000
			JBR 3.1	227°	1300
			1.2	1.9 NM	
CATEGORY	A	B	C	D	
S-23	700-¾ 438 (500-¾)		700-1½ 438 (500-1½)		
CIRCLING	740-1 478 (500-1)		740-1½ 478 (500-1½)	820-2 558 (600-2)	