

WAAS

CH **69300**

W05A

APP CRS

049°

Rwy Idg

5000

TDZE

928

Apt Elev

928

RNAV (GPS) RWY 5

BAXTER COUNTY (BPK)

RNP APCH.

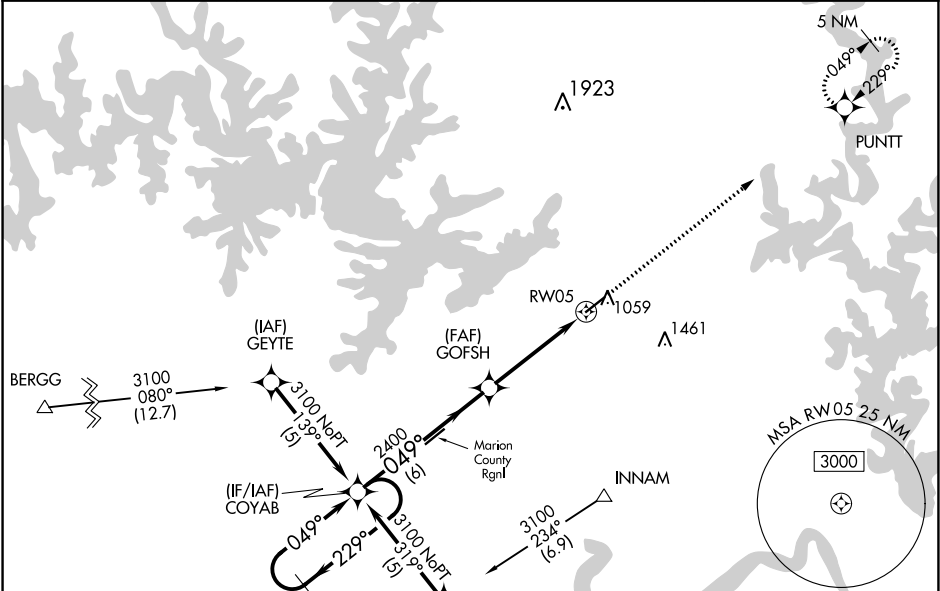
▼

▲

For uncompensated Baro-VNAV systems, LNAV/VNAV NA below -16°C (4°F) or above 54°C(130°F). When local altimeter setting not received, use Fltplan altimeter setting: increase LPV DA to 1261 feet, LNAV/VNAV DA to 1310 feet; increase all MDAs 60 feet and visibility LNAV Cat C ½ SM. Baro-VNAV NA when using Fltplan altimeter setting. Circling NA for Cat C, SE of Rwy 5-23. Circling Rwy 23 NA at night.

MISSED APPROACH: Climb to 3000 direct PUNTT and hold.

ASOS 133.975	MEMPHIS CENTER 126.85 281.55	GCO 121.72	UNICOM 123.0(CTAF) 0
------------------------	----------------------------------------	----------------------	--------------------------------



5 NM Holding Pattern

COYAB

3100 ← 229° / 049° →

GP 3.00° TCH 44

VGSI and RNAV glidepath not coincident (VGSI 3.00/TCH 38).

3000 PUNTT

* RNAV only.

049°

GOFSH

*1 NM to RW05

RW05

2400

6 NM / 3.4 NM / 1 NM

5000 X 75

0.5° UP

049° to RW05

REIL Rwy 5 0

MIRL Rwy 5-23 0

CATEGORY	A	B	C	D
LPV DA	1201-1	273 (300-1)		NA
LNAV/VNAV DA	1250-1¼	322 (400-1¼)		NA
LNAV MDA	1280-1	352 (400-1)		NA
CIRCLING	1400-1	472 (500-1)	1420-1½ 492 (500-1½)	NA