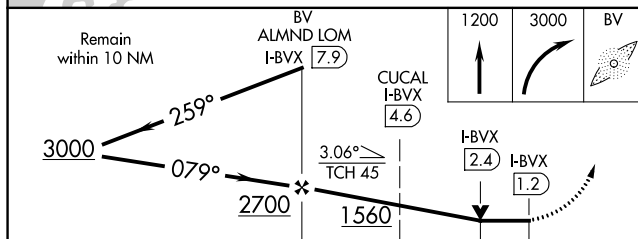
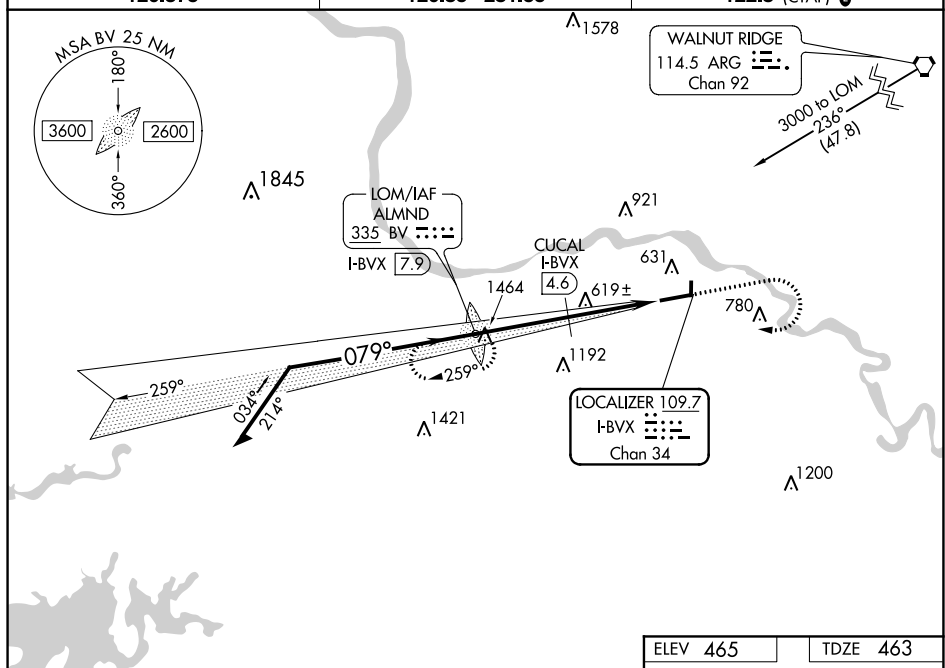


LOC RWY 8
BATESVILLE RGNL (BVX)

MISSED APPROACH: Climb to 1200 then climbing right turn to 3000 direct ALMND LOM/7.9 DME and hold.

T
AUNICOM
122.8 (CTAF) 

		3.4 NM		2.2 NM		1.2			
CATEGORY	A		B		C		D		
S-8	1560-1¼ 1097 (1100-1¼)		1560-1½ 1097 (1100-1½)		1560-3		1097 (1100-3)		
CIRCLING	1560-1¼ 1095 (1100-1¼)		1560-1½ 1095 (1100-1½)		1560-3		1095 (1100-3)		
CUCAL FIX MINIMUMS (DME REQUIRED)									
S-8	880-1		417 (500-1)		880-1¼		417 (500-1¼)		
CIRCLING	980-1		515 (600-1)		980-1½ 515 (600-1½)		1040-2 575 (600-2)		

