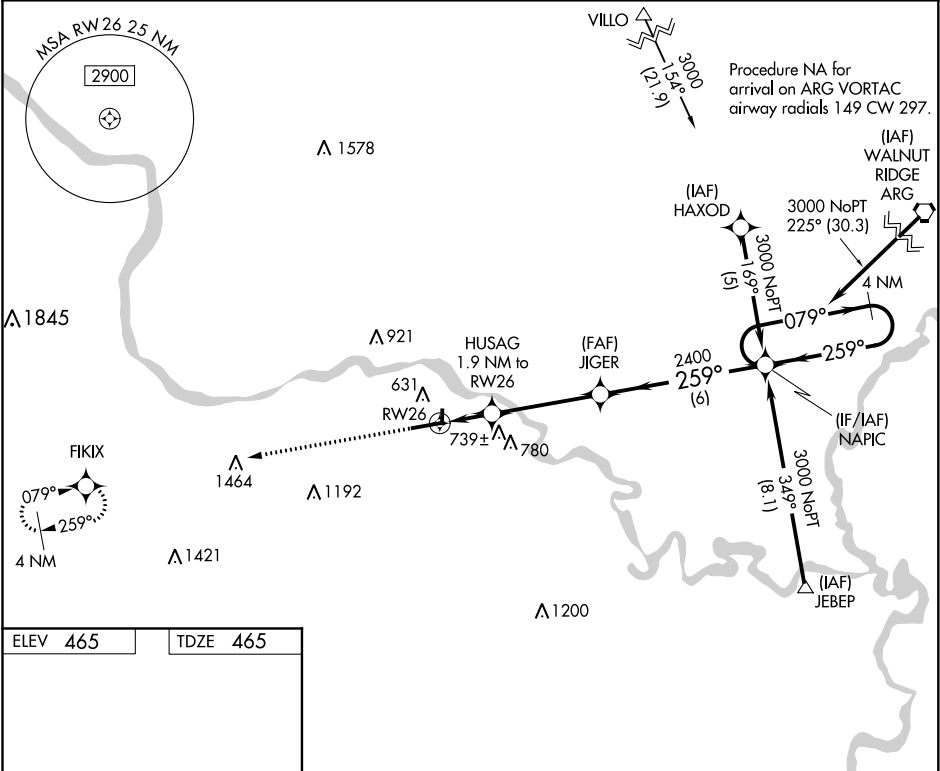


APP CRS	Rwy Idg	<b>6002</b>
<b>259°</b>	TDZE	<b>465</b>
	Apt Elev	<b>465</b>

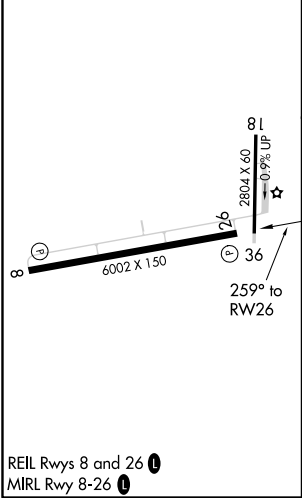
# RNAV (GPS) RWY 26

BATESVILLE RGNL (BVX)

RNP APCH.		MISSED APPROACH: Climb to 3000 direct FIKIX and hold.
Circling NA N of Rwy 8-26. Rwy 26 helicopter visibility reduction below ¾ SM NA.		
AWOS-3PT <b>126.375</b>	MEMPHIS CENTER <b>126.85 281.55</b>	UNICOM <b>122.8 (CTAF) 0</b>



ELEV <b>465</b>	TDZE <b>465</b>
-----------------	-----------------



3000 FIKIX			
HUSAG 1.9 NM to RW26			
JIGER			
NAPIC 4 NM Holding Pattern			
1.4 NM to RW26			
3.05° TCH 44°			
1120 2400			
1.4 0.5 3.9 NM 6 NM			
CATEGORY	A	B	C
LNAV MDA	940-1 475 (500-1)	940-1 475 (500-1)	940-1 475 (500-1)
CIRCLING	980-1 515 (600-1)	980-1 515 (600-1)	1040-2 575 (600-2)