

WAAS CH <b>61337</b> <b>W36A</b>	APP CRS <b>356°</b>	Rwy Idg TDZE <b>1471</b> Apt Elev <b>1477</b>	<b>5001</b> <b>1471</b> <b>1477</b>
--	------------------------	---	---

RNAV (GPS) RWY 36

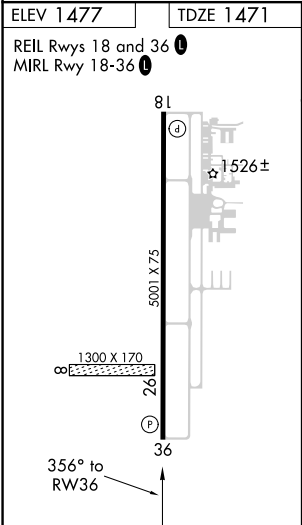
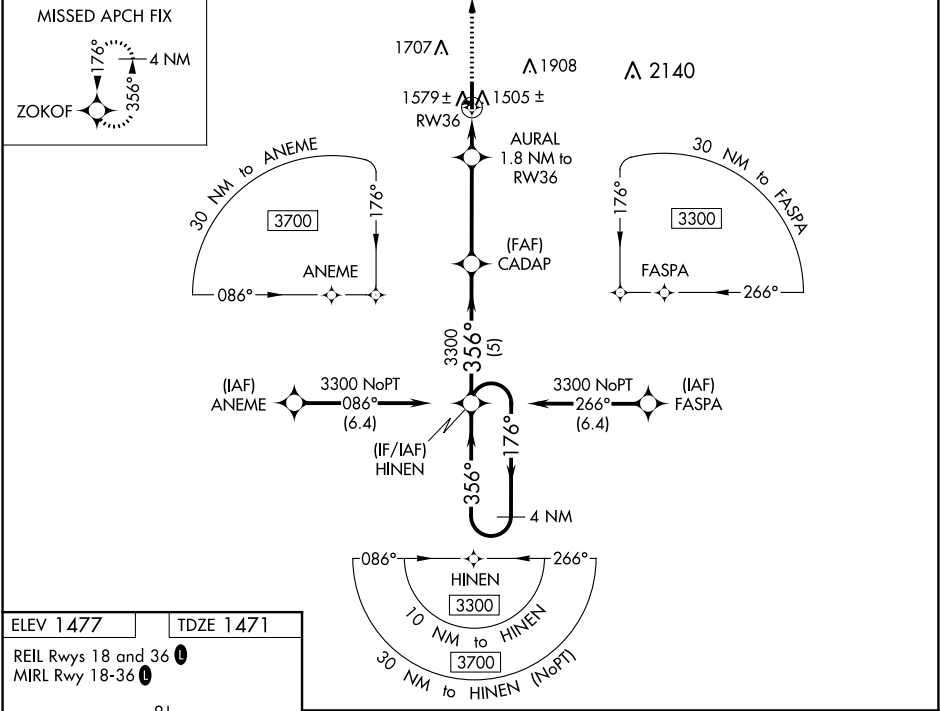
ALVA RGNL (AVK)

⚠

For uncompensated Baro-VNAV systems, LNAV/VNAV NA below -17°C (2°F) or above 54°C (130°F). DME/DME RNP-0.3 NA. When local altimeter setting not received, use Vance AFB altimeter setting and increase all DA 127 feet and all MDA 140 feet; increase LPV all Cats, LNAV/VNAV all Cats and LNAV Cat C visibility ¾ mile and Circling Cat C visibility ½ mile. Baro-VNAV and VDP NA when using Vance AFB altimeter setting.

MISSED APPROACH:  
Climb to 3300 direct ZOKOF and hold.

AWOS-3 <b>121.125</b>	VANCE APP CON ★ <b>126.75 346.325</b>	UNICOM <b>122.8 (CTAF) 0</b>
--------------------------	--	---------------------------------



3300	ZOKOF	*LNAV only.	CADAP	HINEN	4 NM Holding Pattern
		*1 NM to RW36	AURAL 1.8 NM to RW36	3300	176° → 3300
		*2080	3300		← 356°
		1 NM	0.8	3.8 NM	5 NM
CATEGORY	A	B	C	D	
LPV	DA	1721-7/8	250 (300-7/8)	NA	
LNAV/VNAV	DA	1751-1	280 (300-1)	NA	
LNAV	MDA	1840-1	369 (400-1)	NA	
CIRCLING	1980-1 503 (600-1)	2120-1 643 (700-1)	2220-2¼ 743 (800-2¼)	NA	